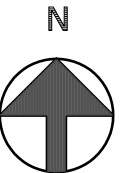


SITUATIE SCHAAL 1 : 1000
 KADASTRALE GEMEENTE AMSTERDAM
 SECTIE S
 PERCEEL 8285 en 8286

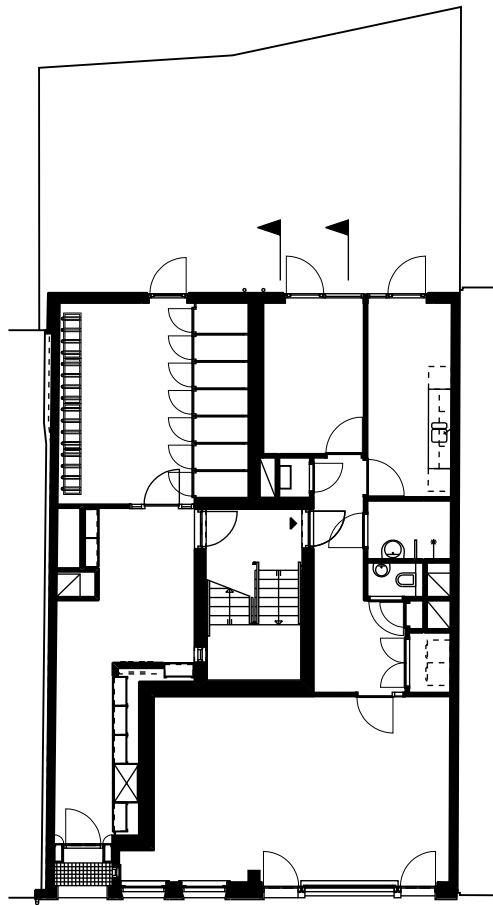
Situatie



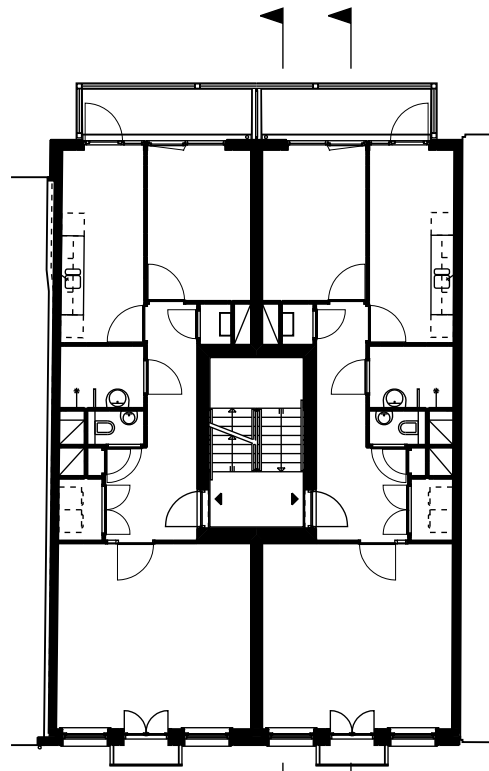
L a M B E R T
 a r c h i t e c t e n

lisdoddelaan 136
 1087 ka amsterdam
 telefoon: 020-6927415
 telefax: 020-6927355
 email: lambertarchitecten@xs4all.nl
 BTW nr. 8008.09.944.B.01

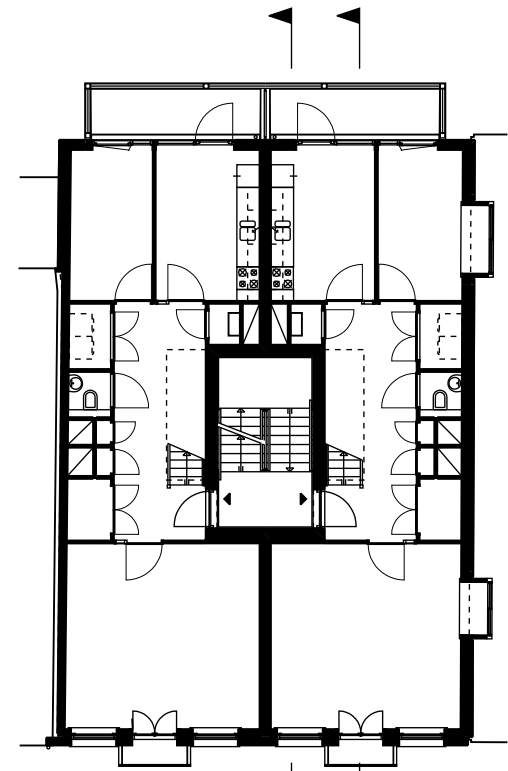
werk Bankastraat 22 en 24 te A'dam	schaal 1:1000	WBD
onderwerp situatie		



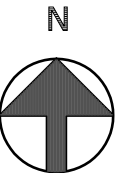
Begane grond



1e verdieping



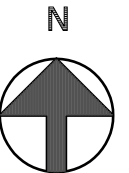
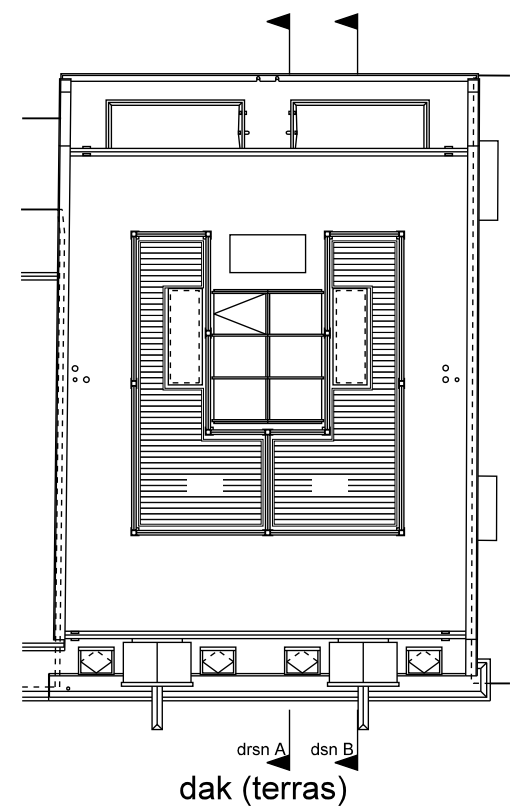
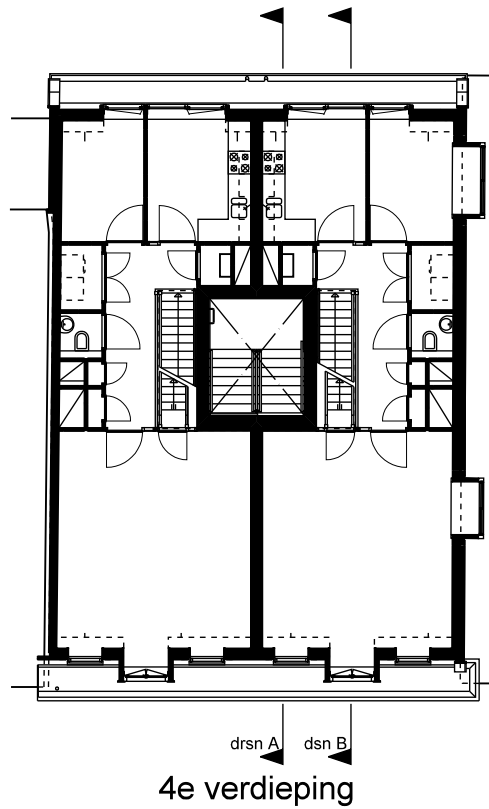
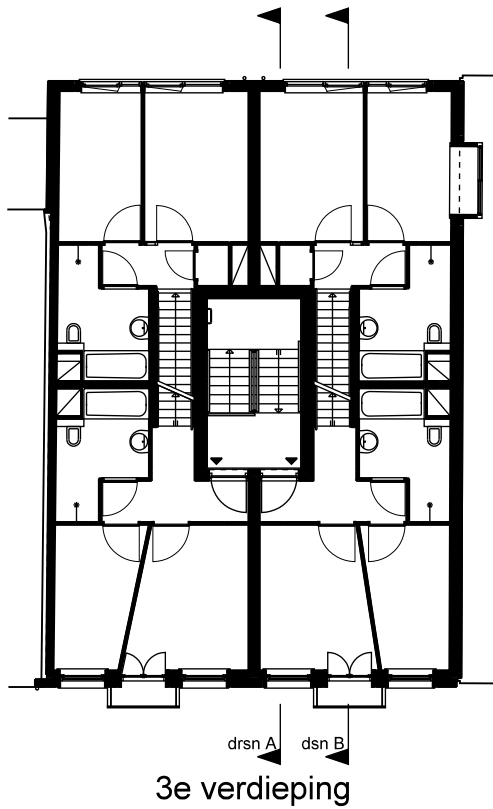
2e verdieping



La**M**B**E**R**T**
a r c h i t e c t e n

lisdoddelaan 136
1087 ka amsterdam
telefoon: 020-6927415
telefax: 020-6927355
email: lambertarchitecten@xs4all.nl
BTW nr. 8008.09.944.B.01

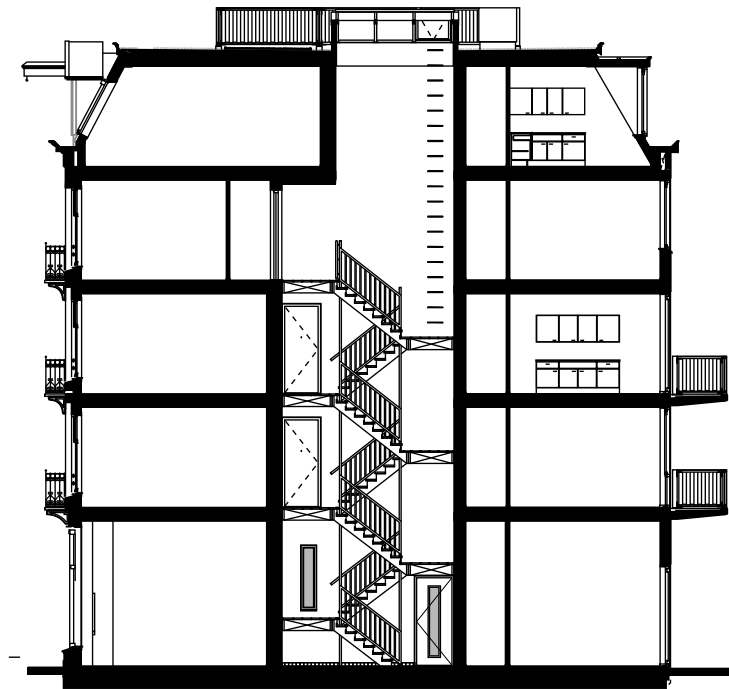
werk	Bankastraat 22 en 24 te A'dam	schaal 1:200	WBD
onderwerp	Plattegronden		



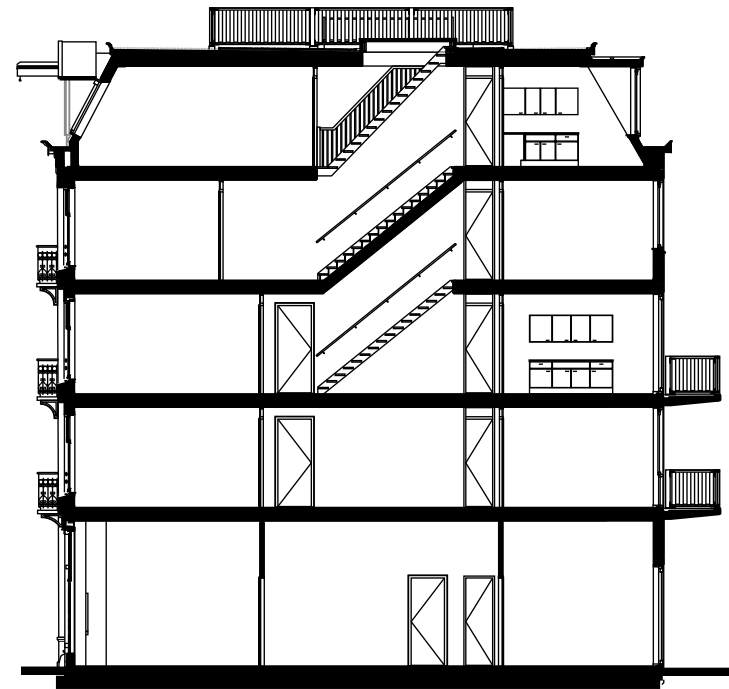
La**M**B**E**R**T**
a r c h i t e c t e n

lisdodelaan 136
1087 ka amsterdam
telefoon: 020-6927415
telefax: 020-6927355
email: lambertarchitecten@xs4all.nl
BTW nr. 8008.09.944.B.01

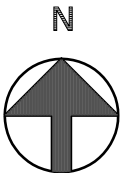
werk	Bankastraat 22 en 24 te A'dam	schaal 1:200	WBD
onderwerp	Plattegronden		



Doorsnede A



Doorsnede B



L a M B E R T
a r c h i t e c t e n

lisdoddelaan 136
1087 ka amsterdam
telefoon: 020-6927415
telefax: 020-6927355
email: lambertarchitecten@xs4all.nl
BTW nr. 8008.09.944.B.01

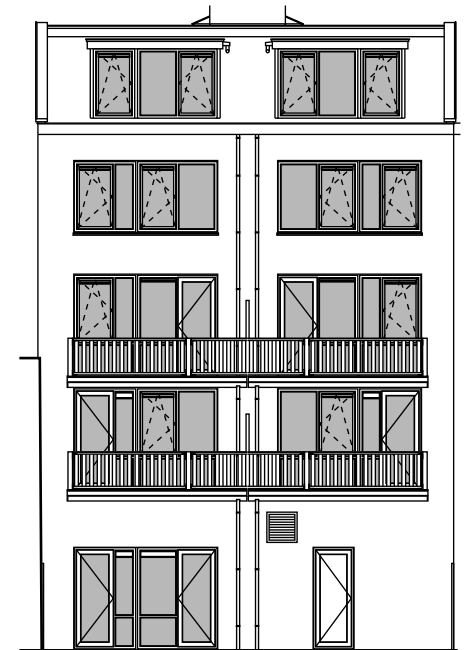
werk	Bankastraat 22 en 24 te A'dam	schaal 1:200	WBD
onderwerp	Doorsneden		



Voorgevel Bankastraat (noord)

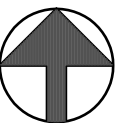


Zijgevel (west)



Achtergevel (zuid)

N



La**M**B**E**R**T**
a r c h i t e c t e n

lisdodelaan 136
1087 ka amsterdam
telefoon: 020-6927415
telefax: 020-6927355
email: lambertarchitecten@xs4all.nl
BTW nr. 8008.09.944.B.01

werk Bankastraat 22 en 24 te A'dam	schaal 1:200	WBD
onderwerp Gevels		