

Legenda:

- Bestemmingsverkeer
- Auto
- Fiets
- B Entree fietsenstalling
- P Entree Parkeergarage

**MVSA**  
Architects

Postbus 2737  
1000CS Amsterdam  
+31 20 5319857

pr@mvsa.nl  
www.mvsa.nl

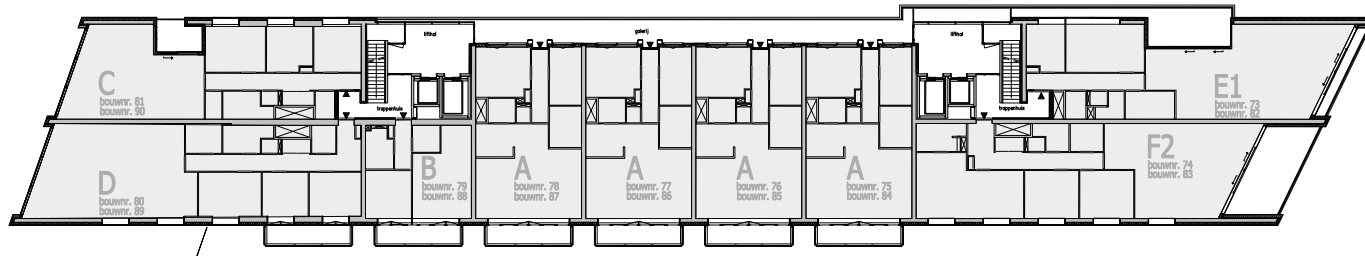
onderwerp  
ODE Kavel 3B

datum  
oktober 2013

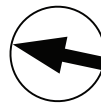
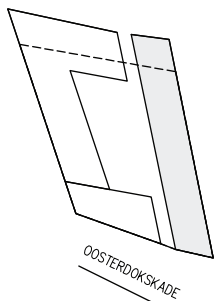
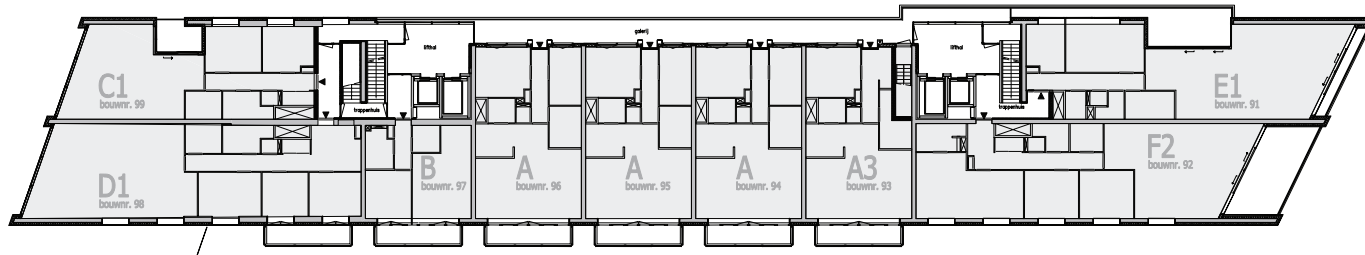
onderdeel  
situatie

schaal

Verdieping 7+8 .....



Verdieping 9 .....



0 10m

**MVSA**  
Architects

Postbus 2737  
1000CS Amsterdam  
+31 20 5319857

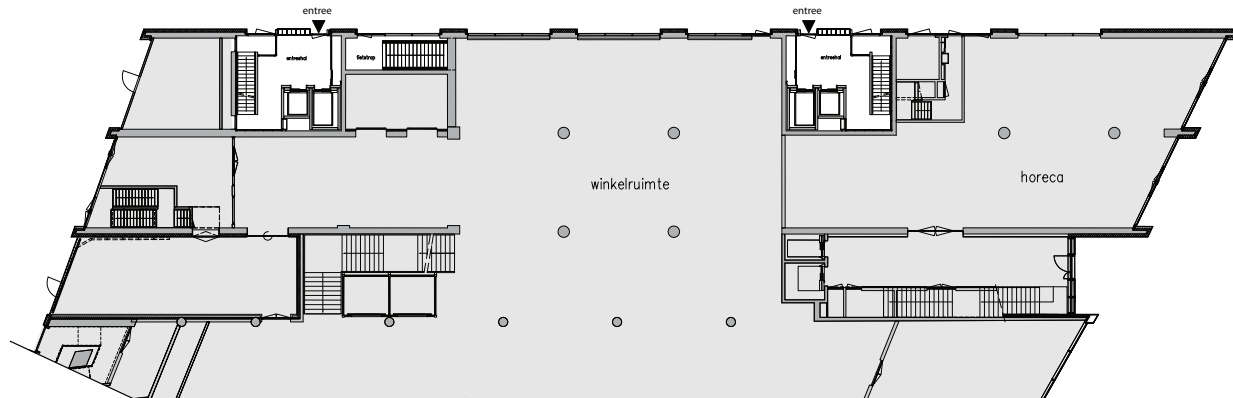
pr@mvsa.nl  
www.mvsa.nl

onderwerp  
ODE Kavel 3B

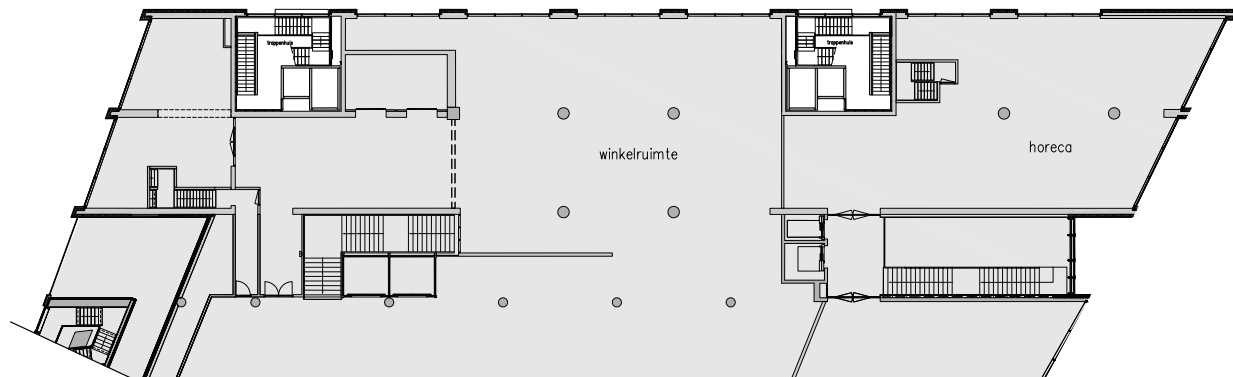
onderdeel  
plattgrond niveau  
7+8 , 9

datum  
oktober 2013

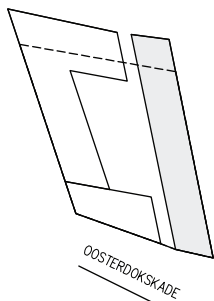
schaal  
1:500



Begane grond



Verdieping 1



0 10m

**MVSA**  
Architects

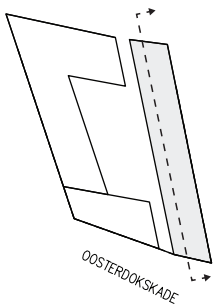
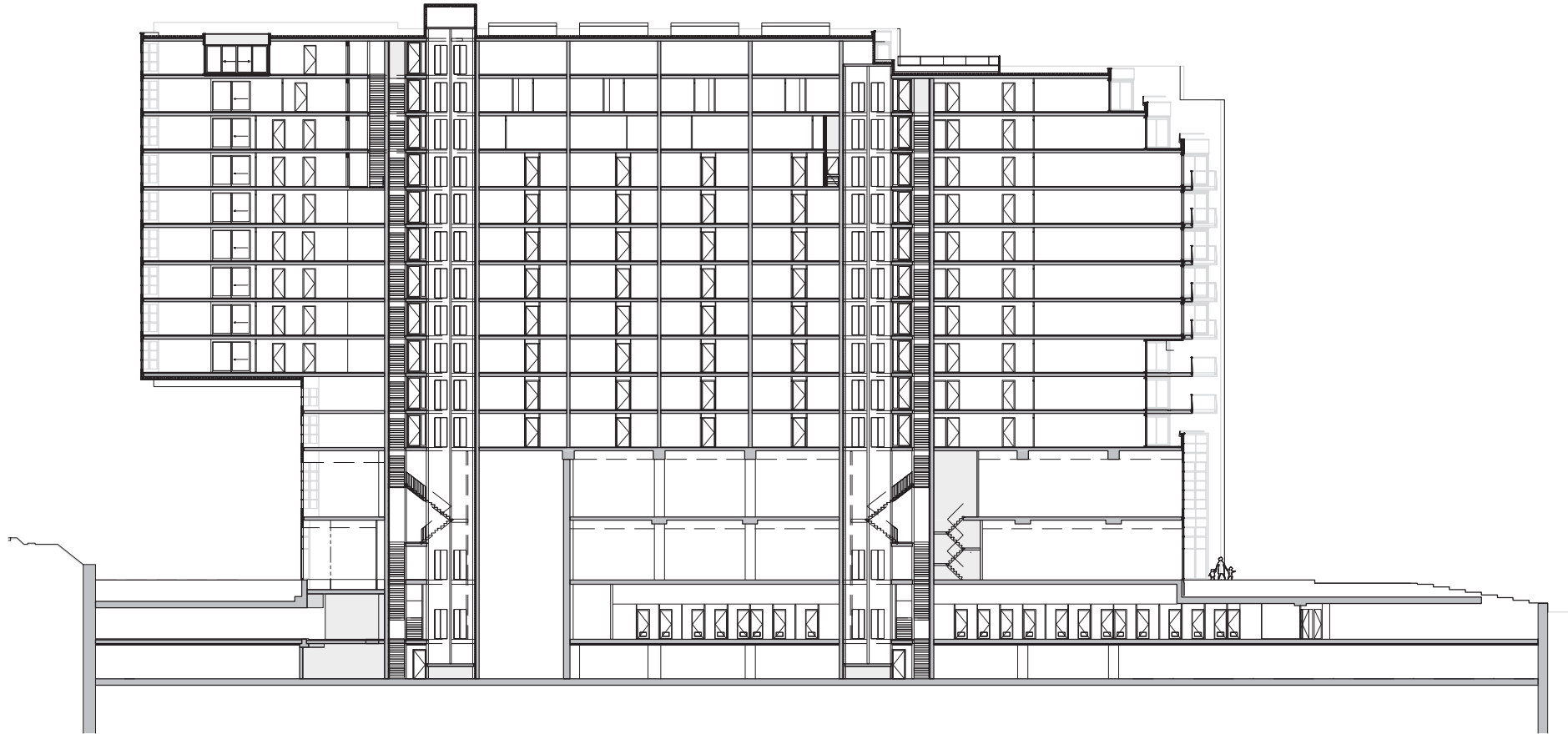
Postbus 2737  
1000CS Amsterdam  
+31 20 5319857  
pr@mvsa.nl  
www.mvsa.nl

onderwerp  
ODE Kavel 3B

onderdeel  
plattegrond niveau  
0, +1

datum  
oktober 2013

schaal  
1:500



0 10m

**MVSA**  
Architects

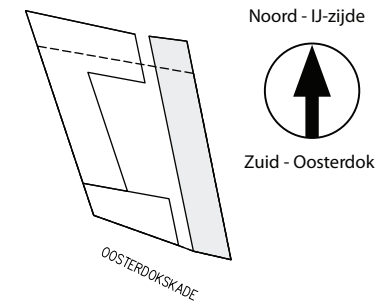
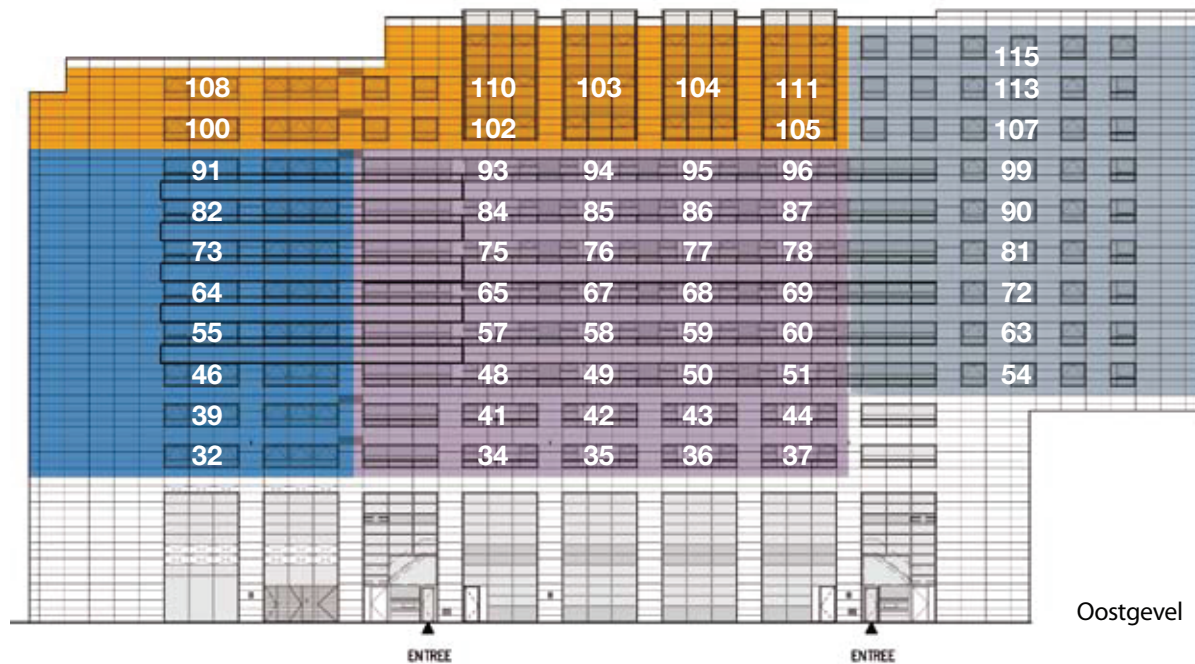
Postbus 2737 pr@mvsa.nl  
1000CS Amsterdam www.mvsa.nl  
+31 20 5319857

onderwerp  
ODE Kavel 3B

onderdeel  
doorsnede

datum  
oktober 2013

schaal  
1:500



Aantal	Woonsfeer
40	Island life
16	Waterfront
10	Skyline
18	Motion life

**MVSA**  
Architects

Postbus 2737  
1000CS Amsterdam  
+31 20 5319857

pr@mvsa.nl  
www.mvsa.nl

onderwerp  
ODE Kavel 3B

datum  
oktober 2013

onderdeel  
Differentiatieschema

schaal

Noord - IJ-zijde



Zuid - Oosterdok

Woonoppervlak: ca. 78 m<sup>2</sup>

Verdieping: 4 t/m 9

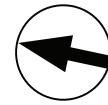
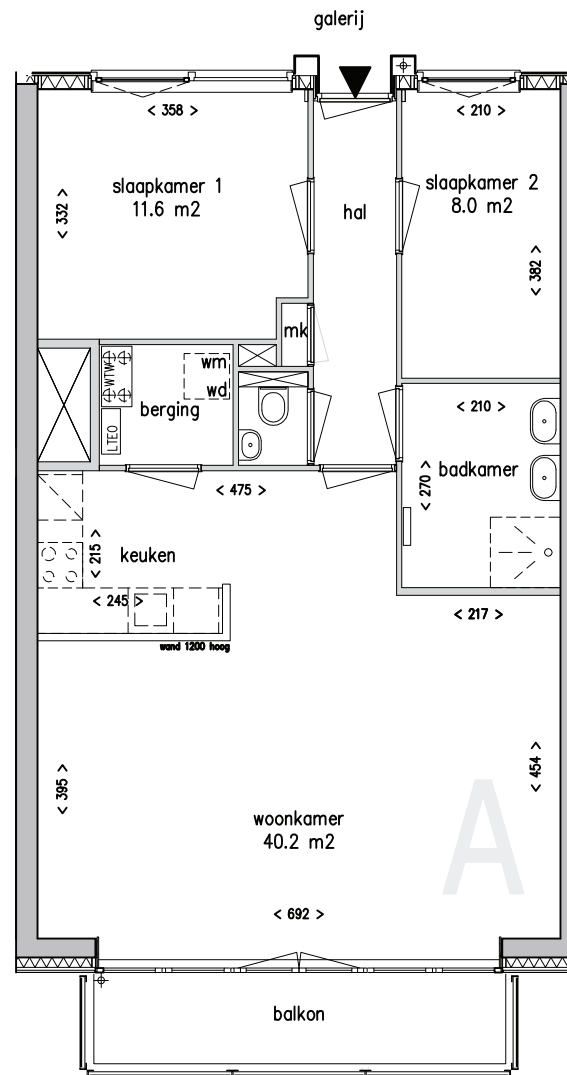
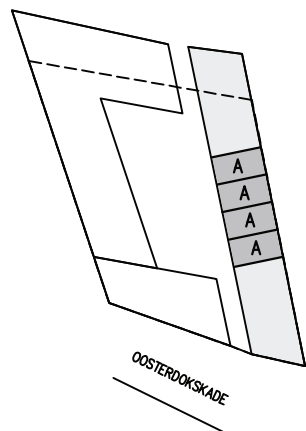
Schaal: 1:100

Bouwnummers: 48, 49, 50, 51, 57

58, 59, 60, 66, 67, 68, 69, 75, 76, 77,

78, 84, 85, 86, 87, 94, 95, 96

Woonsfeer: Islandlife



0 1m 5m

**MVSA**  
Architects

Postbus 2737  
1000CS Amsterdam  
+31 20 5319857

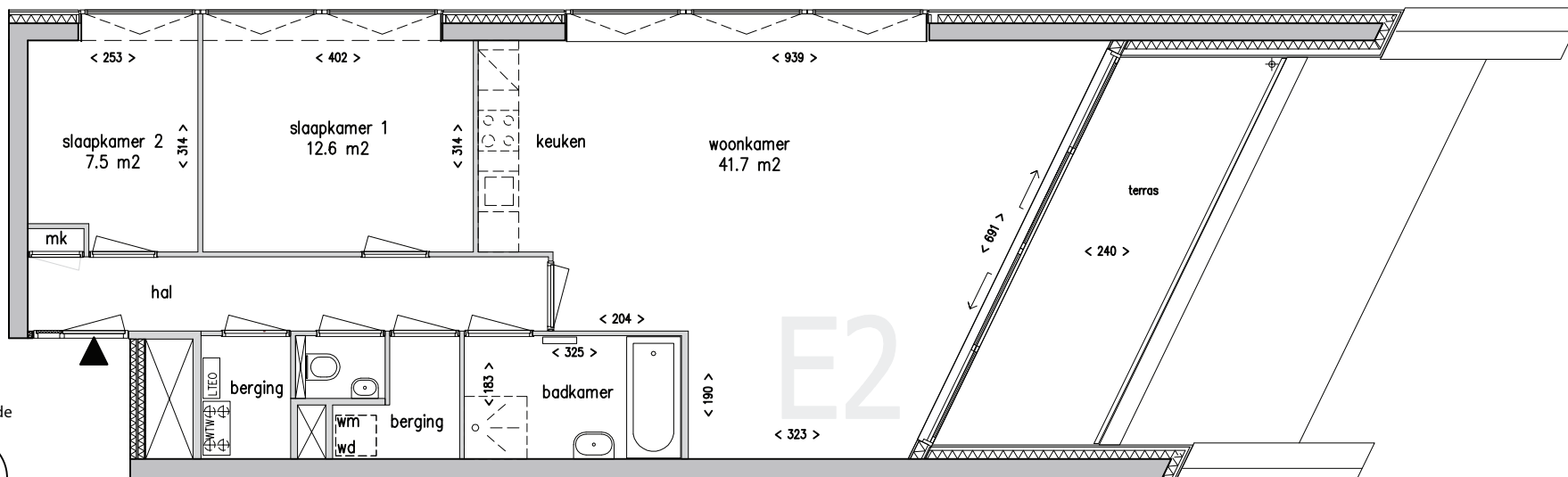
pr@mvsa.nl  
www.mvsa.nl

onderwerp  
ODE Kavel 3B

onderdeel  
Woning type A

datum  
oktober 2013

schaal  
1:100



Noord - IJ-zijde



Zuid - Oosterdok



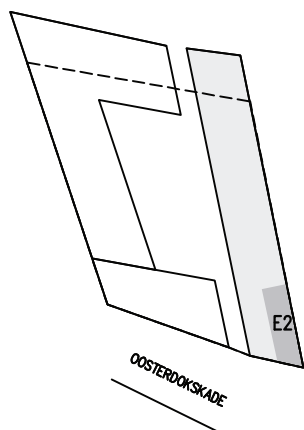
Woonoppervlak: ca. 85 m<sup>2</sup>

Verdieping: 11

Schaal: 1:100

Bouwnummer: 108

Woonsfeer: Skyline



0 1m 5m

**MVSA**  
Architects

Postbus 2737  
1000CS Amsterdam  
+31 20 5319857

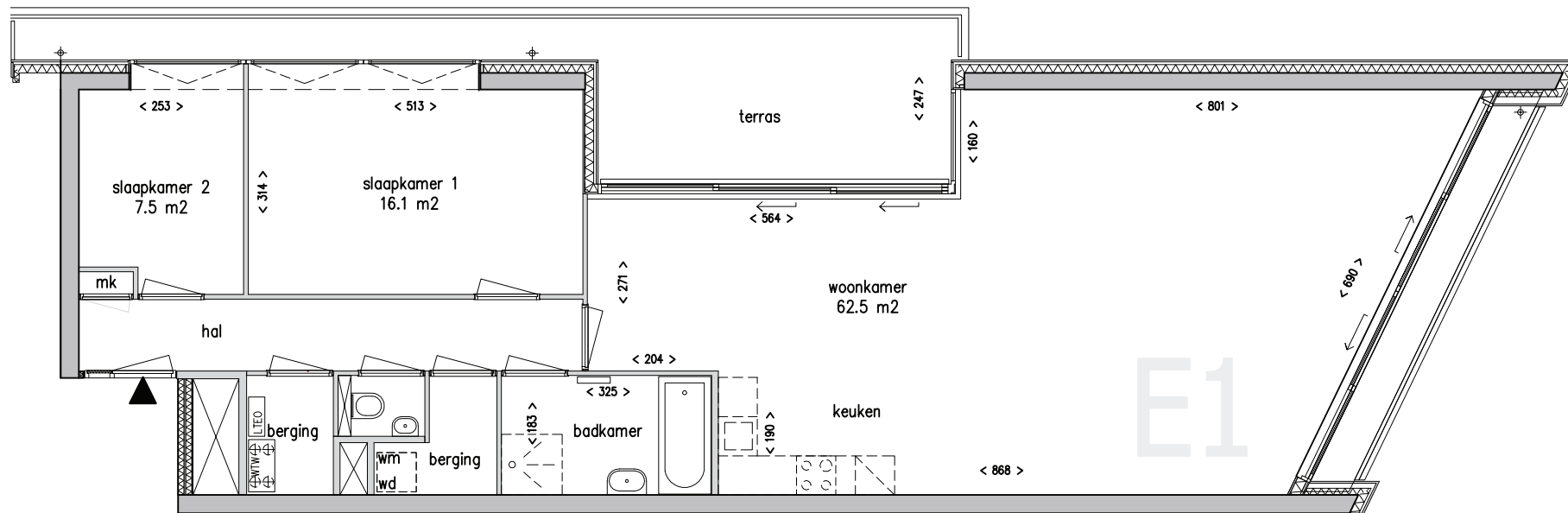
pr@mvsa.nl  
www.mvsa.nl

onderwerp  
ODE Kavel 3B

onderdeel  
Woning type E2

datum  
oktober 2013

schaal  
1:100



Noord - IJ-zijde



Zuid - Oosterdok



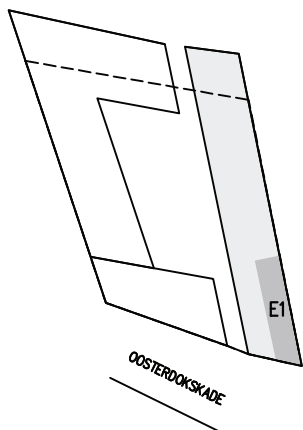
Woonoppervlak: ca. 109 m<sup>2</sup>

Verdieping: 5 t/m 9

Schaal: 1:100

Bouwnummers: 55, 64, 73, 82, 91

Woonsfeer: Waterfront



0 1m 5m

**MVSA**  
Architects

Postbus 2737  
1000CS Amsterdam  
+31 20 5319857

pr@mvsa.nl  
www.mvsa.nl

onderwerp  
ODE Kavel 3B

onderdeel  
Woning type E1

datum  
oktober 2013

schaal  
1:100



Noord - IJ-zijde



Zuid - Oosterdok

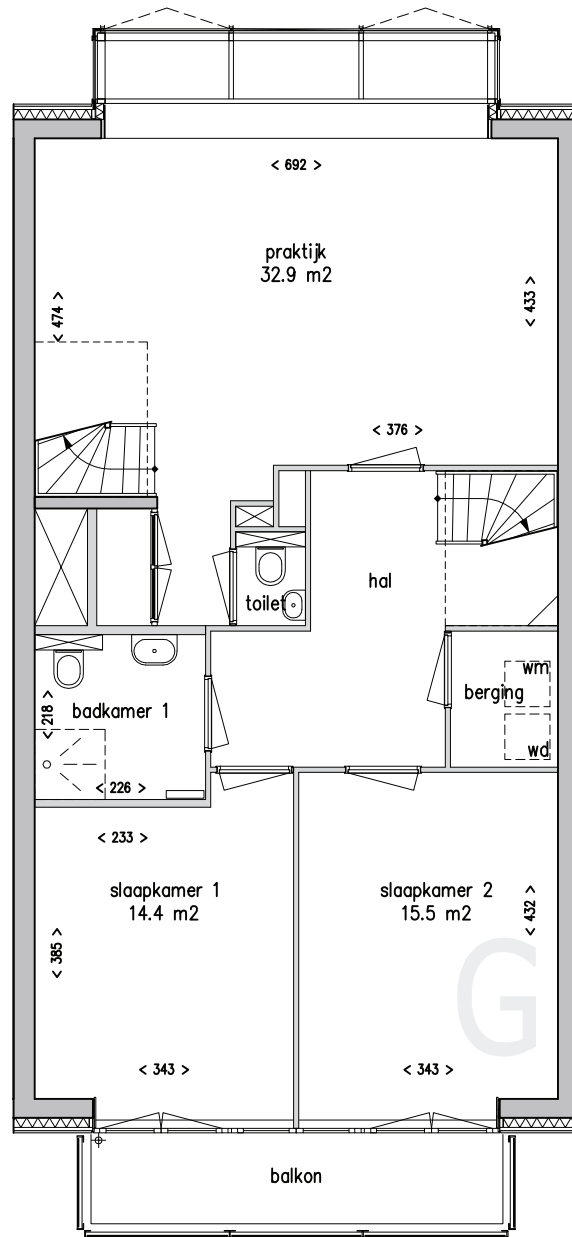
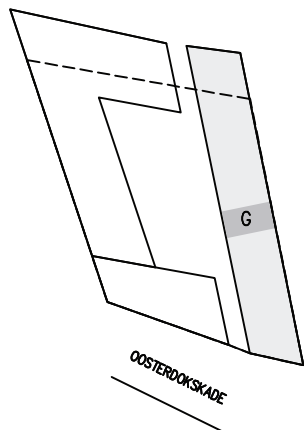
Totaal woonoppervlak: ca. 239 m

Verdieping: 10 t/m 12

Schaal: 1:100

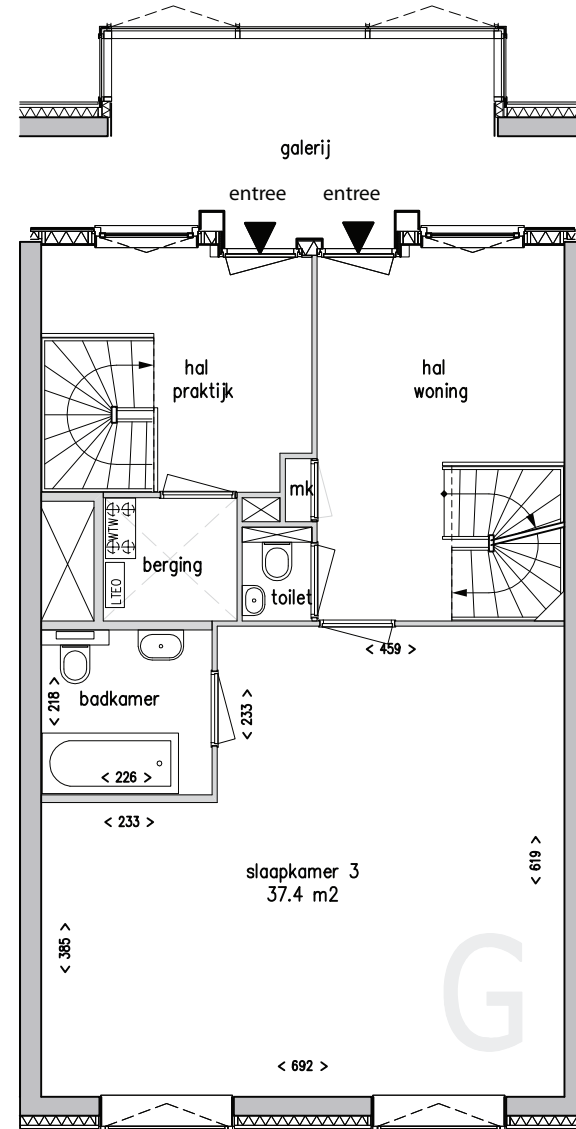
Bouwnummer: 103, 104

Woonsfeer: Skyline



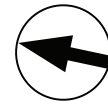
Verdieping: 10

Woonoppervlak: ca. 88 m<sup>2</sup>



Verdieping: 11

Woonoppervlak: ca. 76 m<sup>2</sup>



0 1m 5m

**MVSA**  
Architects

Postbus 2737  
1000CS Amsterdam  
+31 20 5319857  
pr@mvsa.nl  
www.mvsa.nl

onderwerp  
ODE Kavel 3B

onderdeel  
Woning type G

datum  
oktober 2013

schaal  
1:100

Noord - IJ-zijde



Zuid - Oosterdok

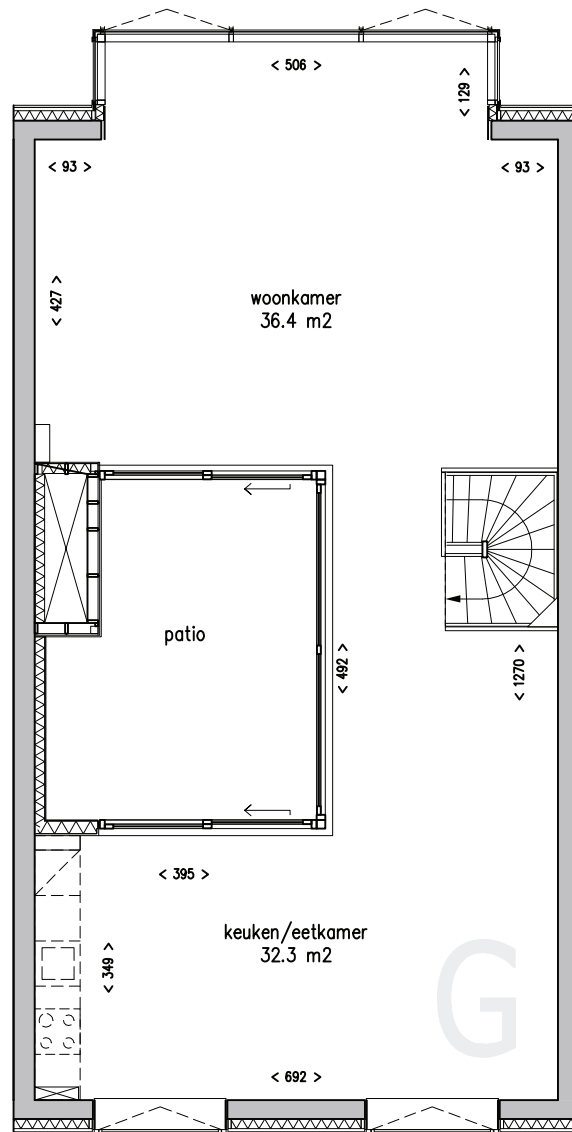
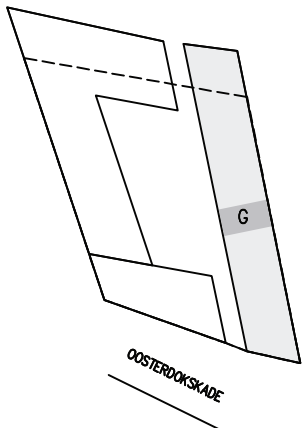
Totaal woonoppervlak: ca. 239 m

Verdieping: 10 t/m 12

Schaal: 1:100

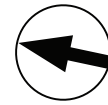
Bouwnummer: 103, 104

Woonsfeer: Skyline



Verdieping: 12

Woonoppervlak: ca. 75 m<sup>2</sup>



0 1m 5m

**MVSA**  
Architects

Postbus 2737  
1000CS Amsterdam  
+31 20 5319857

pr@mvsa.nl  
www.mvsa.nl

onderwerp  
ODE Kavel 3B

onderdeel  
Woning type G

datum  
oktober 2013

schaal  
1:100