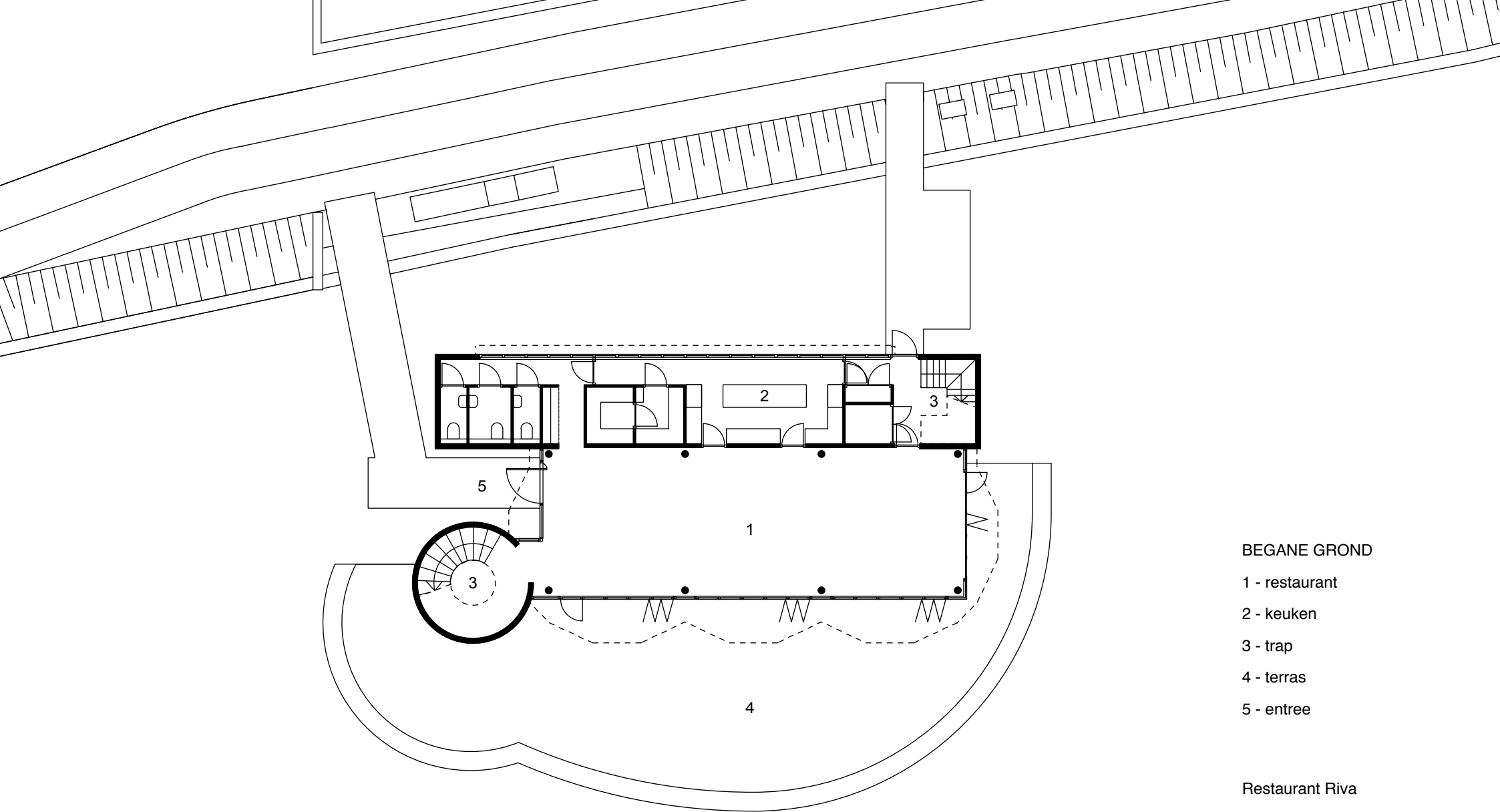


## SITUATIE

Restaurant Riva  
Amstelboulevard Amsterdam  
schaal 1:2000 dd.02/10/'12

**DAM**  
&  
PARTNERS  
ARCHITECTEN



BEGANE GROND

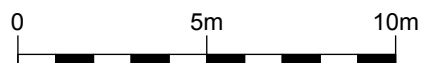
- 1 - restaurant
- 2 - keuken
- 3 - trap
- 4 - terras
- 5 - entree

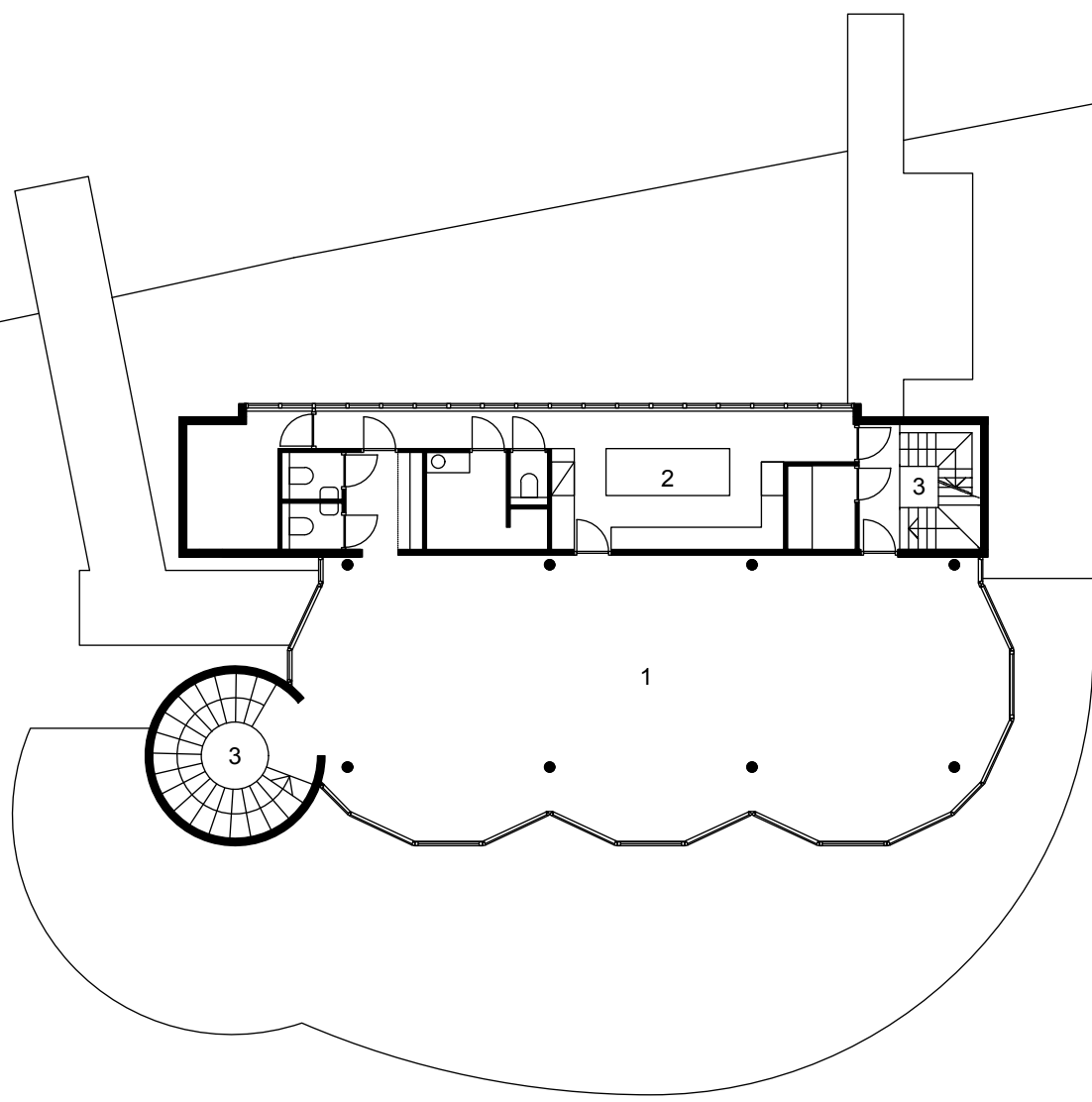
Restaurant Riva

Amstelboulevard Amsterdam

schaal 1:200 dd.02/10/12

**DAM**  
&  
PARTNERS  
ARCHITECTEN





BEGANE GROND

1 - restaurant

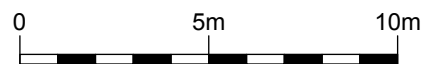
2 - keuken

3 - trap

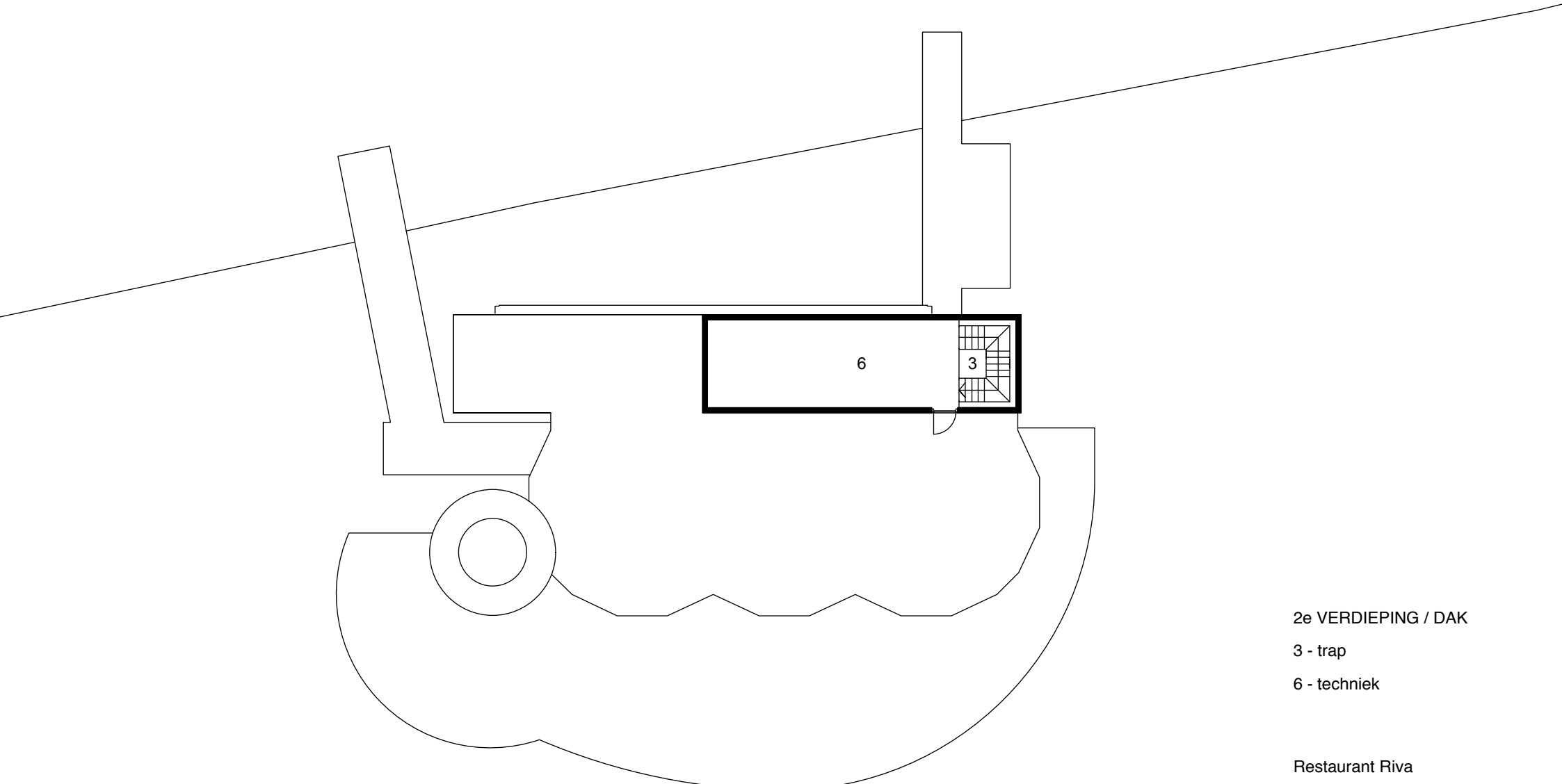
Restaurant Riva

Amstelboulevard Amsterdam

schaal 1:200 dd.02/10/12



DAM  
&  
PARTNERS  
ARCHITECTEN



2e VERDIEPING / DAK

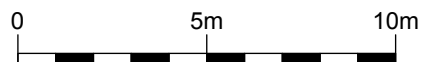
3 - trap

6 - techniek

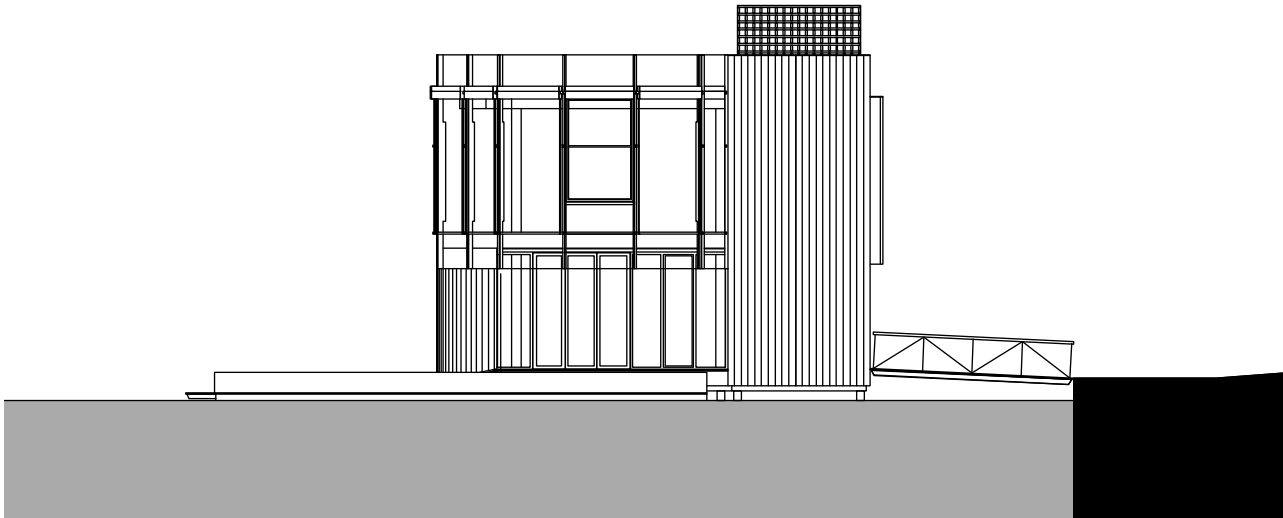
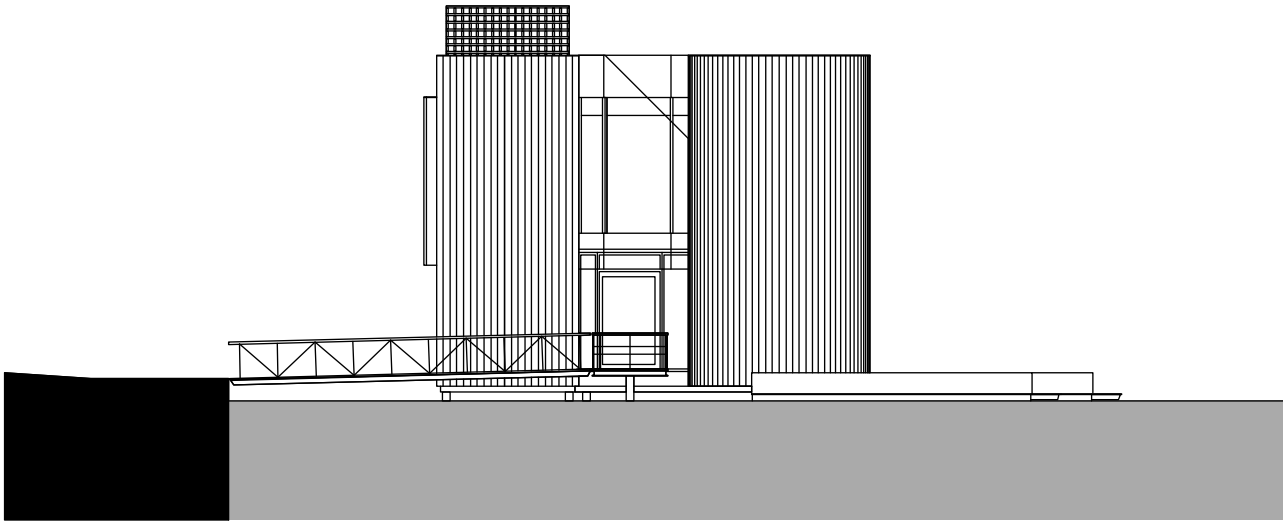
Restaurant Riva

Amstelboulevard Amsterdam

schaal 1:200 dd.02/10/12

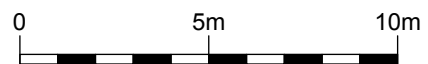


**DAM**  
&  
PARTNERS  
ARCHITECTEN

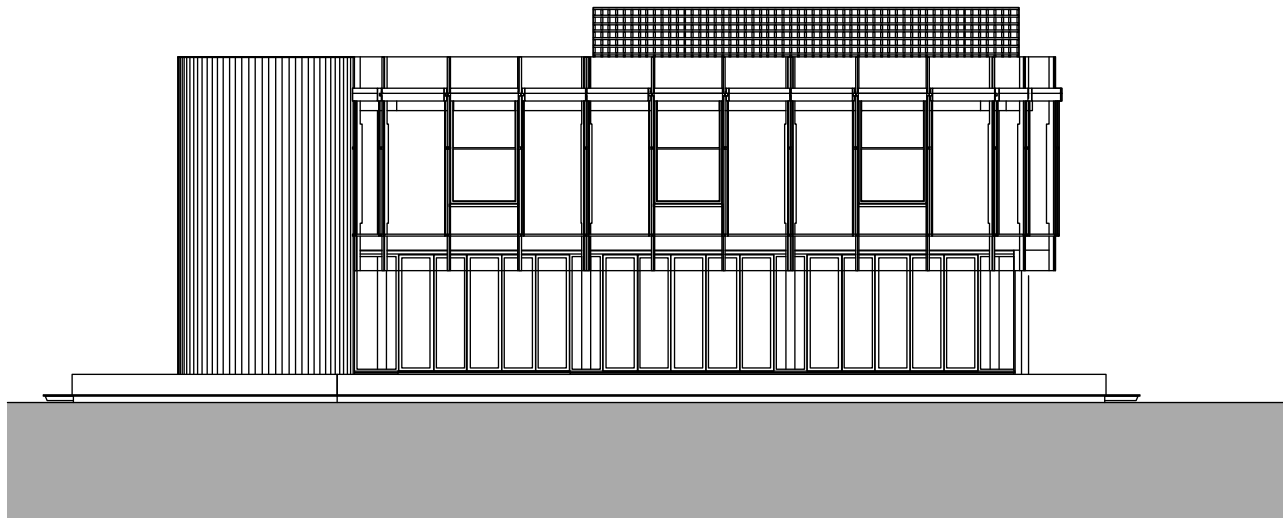
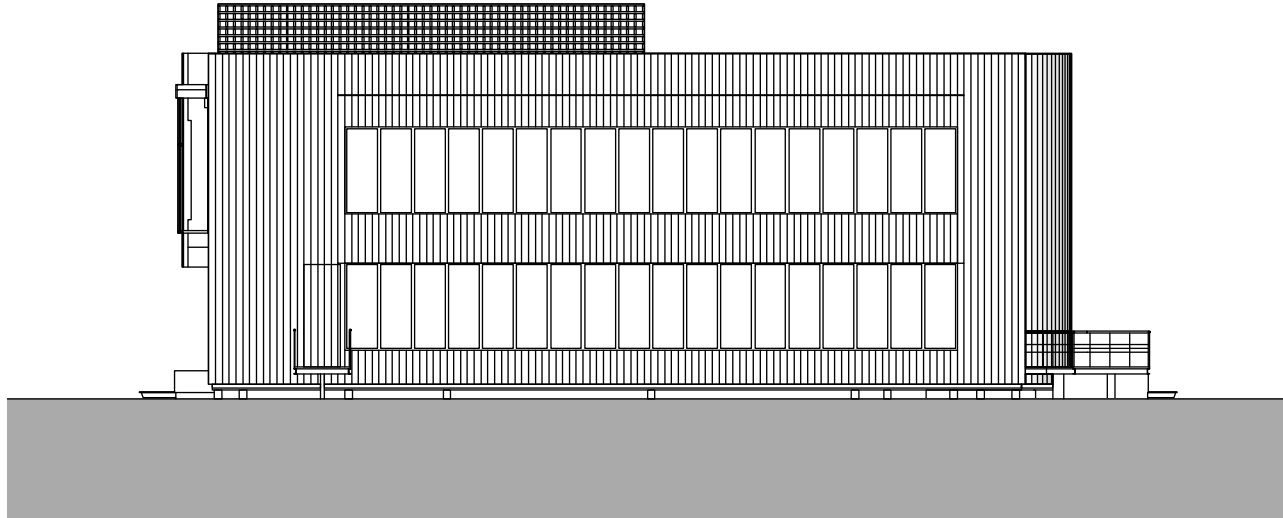


NOORD- EN WESTGEVEL

Restaurant Riva  
Amstelboulevard Amsterdam  
schaal 1:200 dd.02/10/12

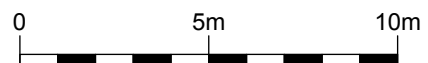


DAM  
&  
PARTNERS  
ARCHITECTEN

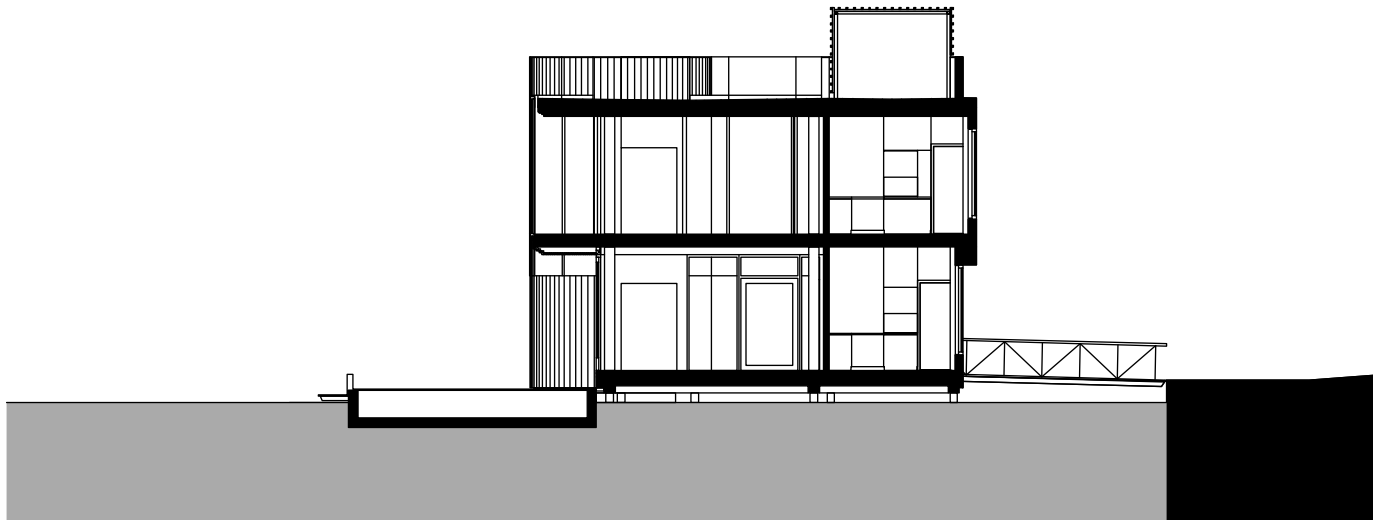
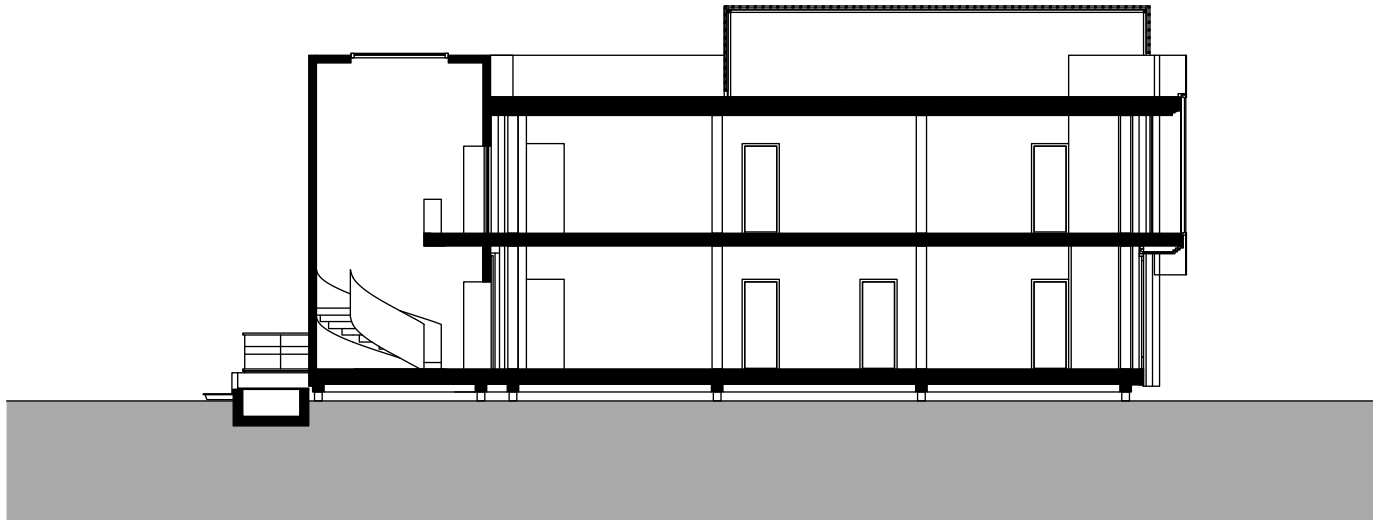


OOST- EN WESTGEVEL

Restaurant Riva  
Amstelboulevard Amsterdam  
schaal 1:200 dd.02/10/12

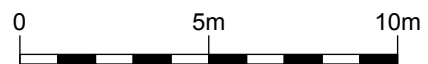


DAM  
&  
PARTNERS  
ARCHITECTEN



DOORSNEDES

Restaurant Riva  
Amstelboulevard Amsterdam  
schaal 1:200 dd.02/10/12



DAM  
&  
PARTNERS  
ARCHITECTEN