

De Kastoor

bnb architecten  
BO6 Architectenbureau

Londen en van Holland

Bedrijfs-kantoorruimte

Betronics

Pedro de Medinalaan

Pedro de Medinalaan

Duarte Pachecostraat

Martin Cortesstraat

Francisco Faleirosstraat

Jan Olphert Vaillantaan

Jan Olphert Vaillantaan

Jan Olphert Vaillantaan

Pybo Steenstraat

Geard Huis van Keu

Edmund Gunterstraat

Pieter h

Haringbuisdijk

aanlegsteiger

Navigatiepad

HEIS

TRAM

AUTO

Ljuburgaan

Ljuburgaan

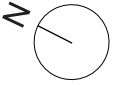
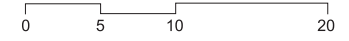
TRAMWEG

Ljuburgaan

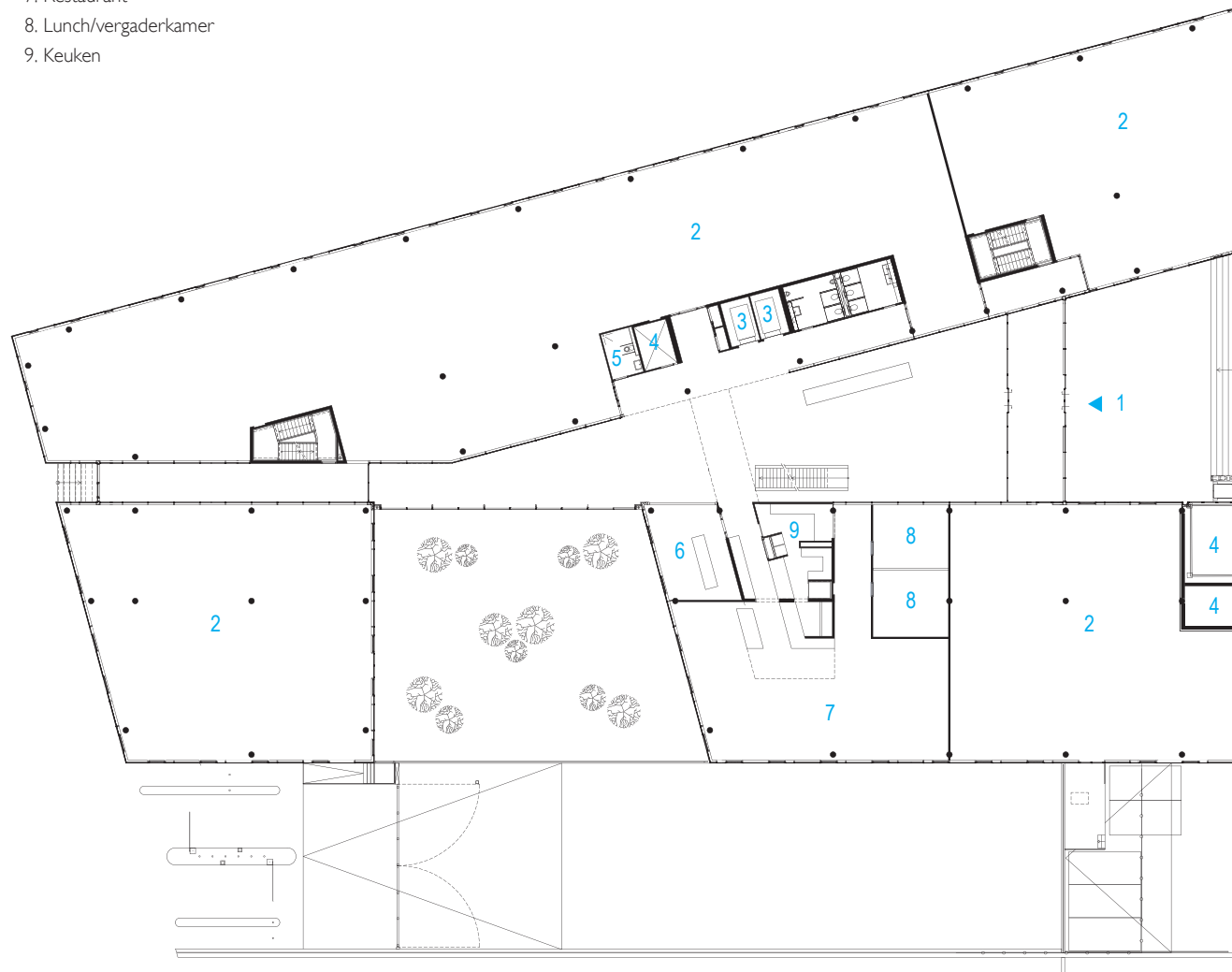
Ljuburgaan

TRAMWEG

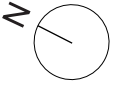
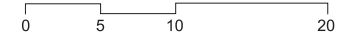
# Begane grond



1. Entree
2. Kantoorruimte
3. Lift
4. Techniek
5. Miva toilet
6. Café
7. Restaurant
8. Lunch/vergaderkamer
9. Keuken



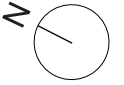
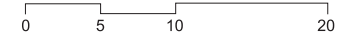
# 1e verdieping



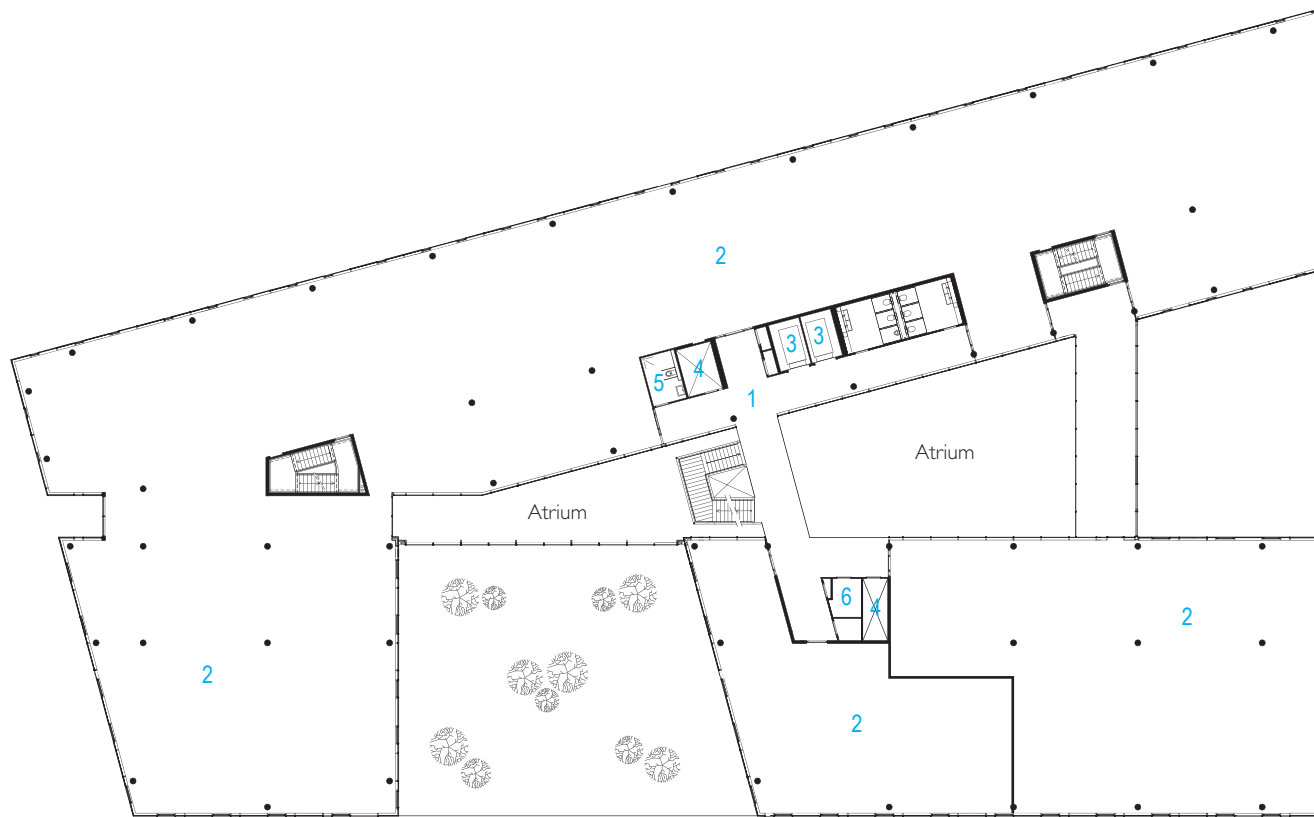
1. Algemene ruimte
2. Kantoorruimte
3. Lift
4. Techniek
5. Miva toilet
6. Werkkast
7. Luifel



# 2e verdieping

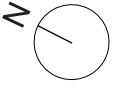
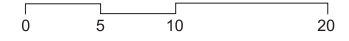


- 1. Algemene ruimte
- 2. Kantoorruimte
- 3. Lift
- 4. Techniek
- 5. Miva toilet
- 6. Werkkast



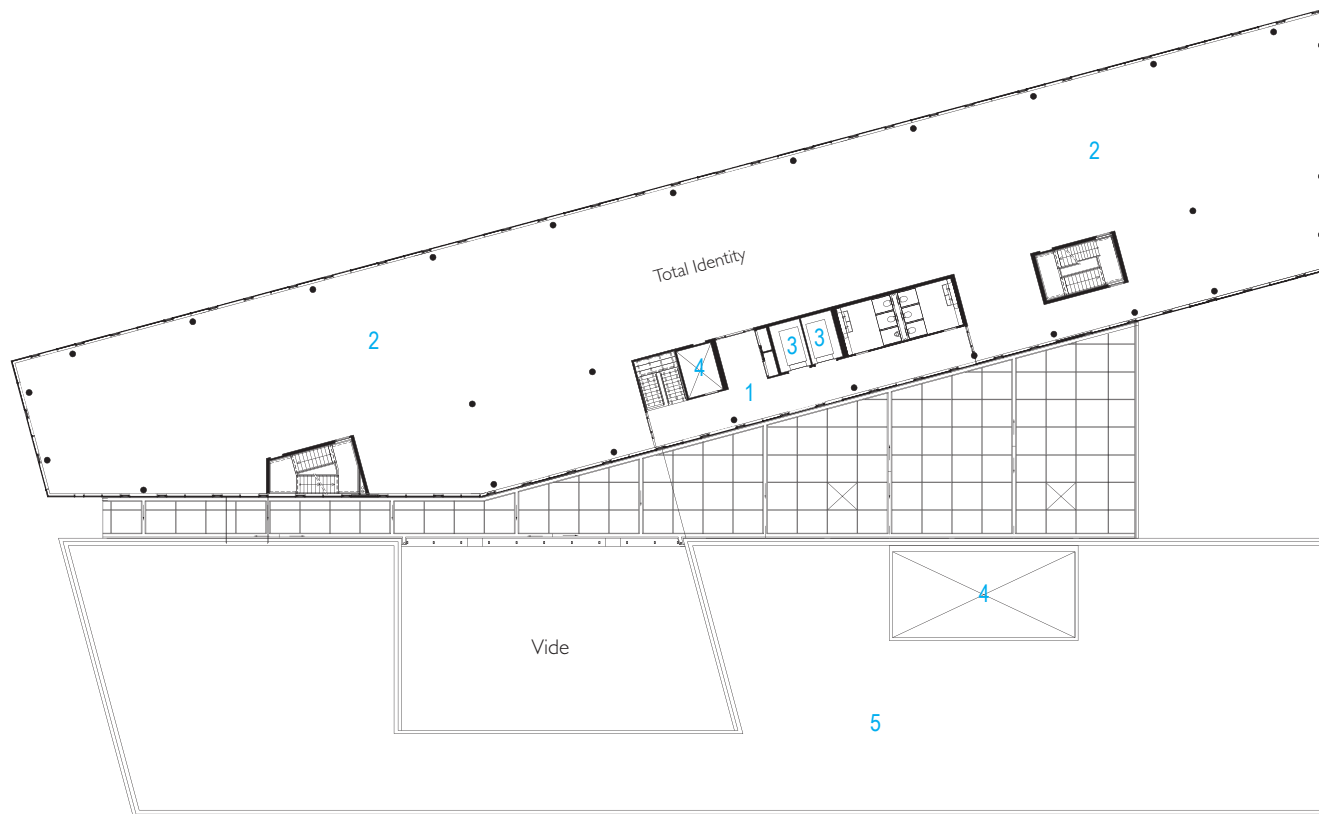
# 3e verdieping

1. Algemene ruimte
2. Kantoorruimte
3. Lift
4. Techniek
5. Werkkast



# 4e verdieping

1. Algemene ruimte
2. Kantoorruimte
3. Lift
4. Techniek
5. Dak



# Souterrain



1. Entree
2. Parkeren
3. Lift
4. Techniek
5. Fietsenstalling
6. Serverruimte
7. Opslag
8. Containerruimte
9. Entree parkeergarage/expeditie

