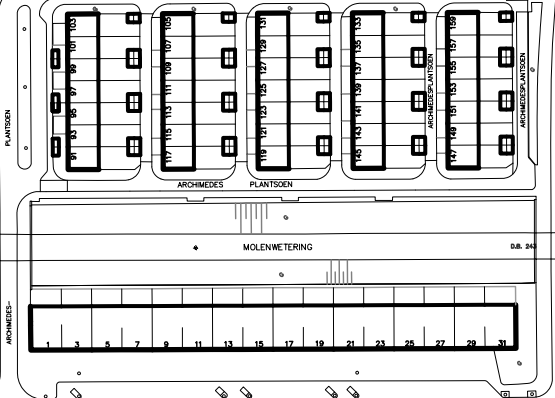
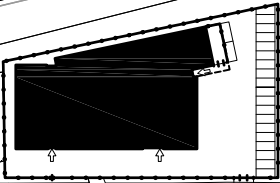


situatie: gemeente Amsterdam
 sectie: B nr. WTG02 / 04810

Moerpeil = 250mm boven kruin van de weg
 = 3520 +/- NAP



KRISBLAN

PLANTSOEN

ARCHIMEDESPLANTSOEN

ARCHIMEDES PLANTSOEN

MOLENWETERING

ARCHIMEDESPLANTSOEN

ARCHIMEDESPLANTSOEN

D.B. 27

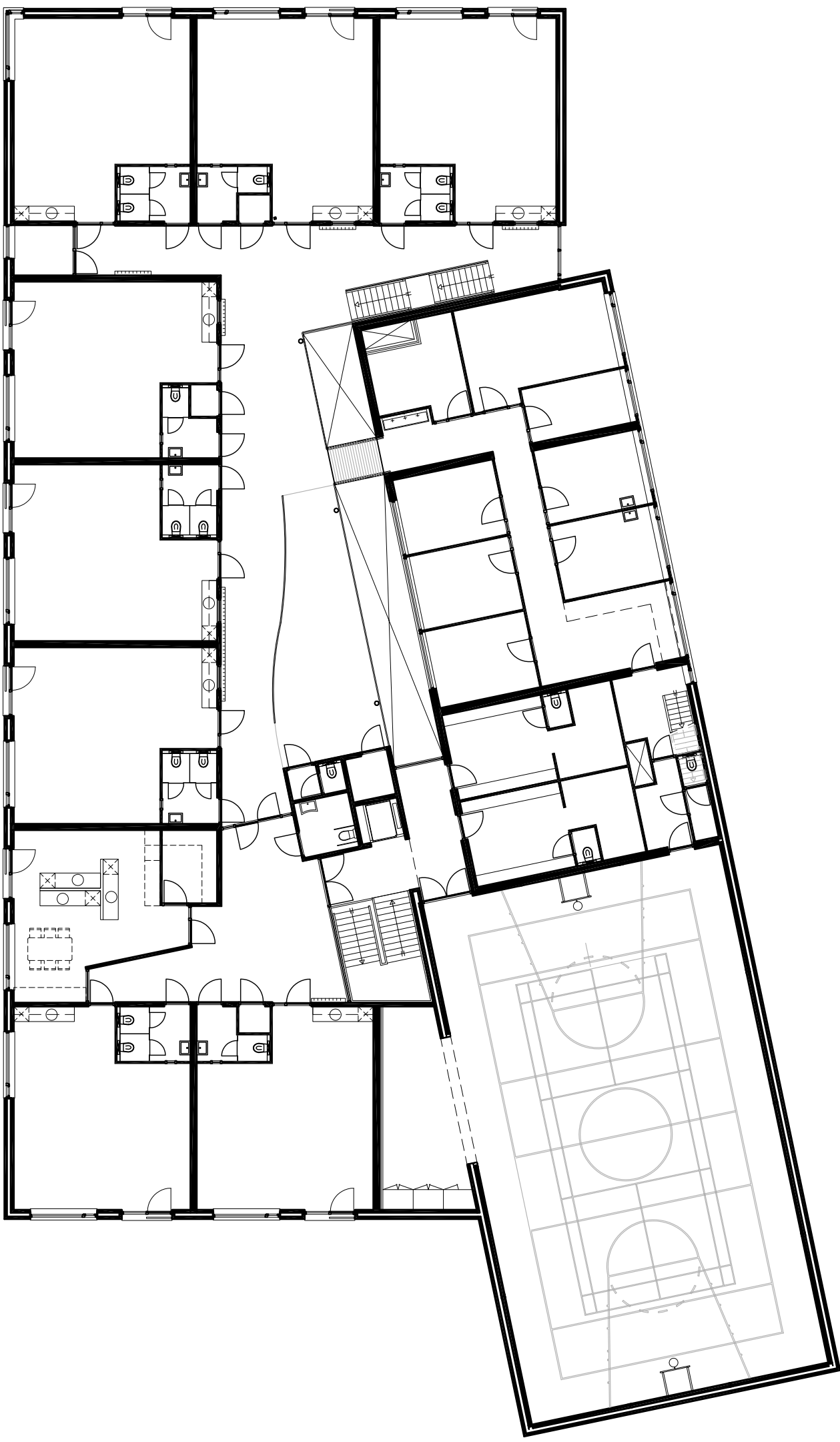
D.B. 24

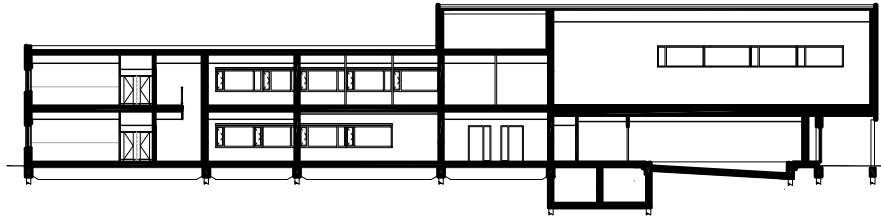
- 1
- 3
- 5
- 7
- 9
- 11
- 13
- 15
- 17
- 19
- 21
- 23
- 25
- 27
- 29
- 31

begane grond

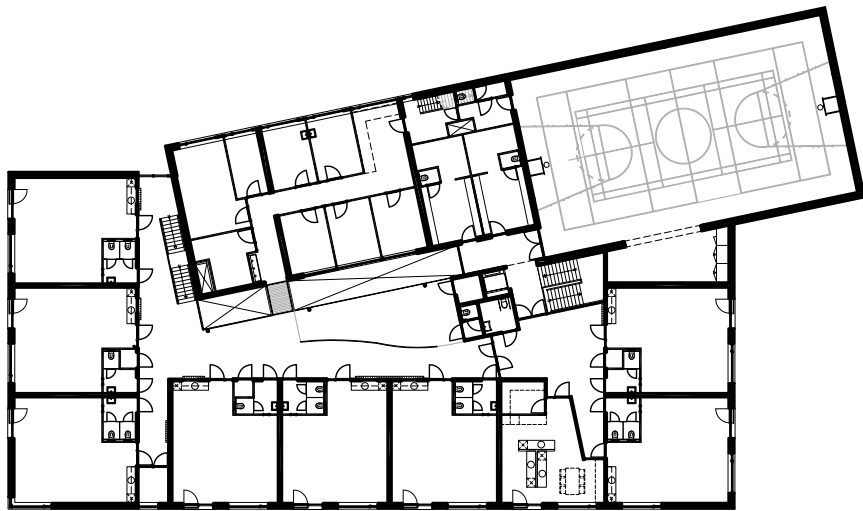


verdieping





doorsnede



verdieping



begane grond