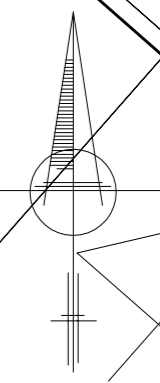
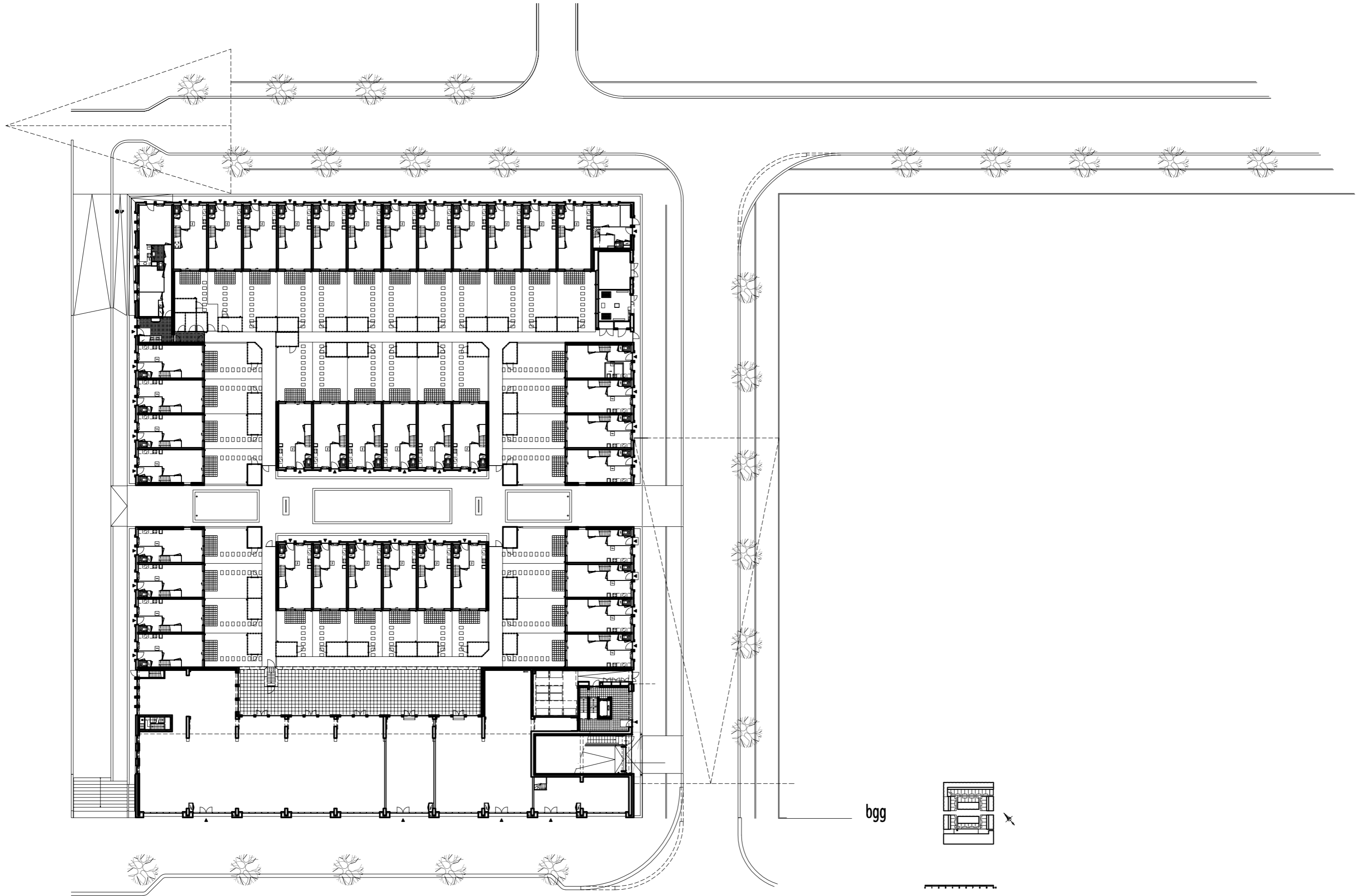


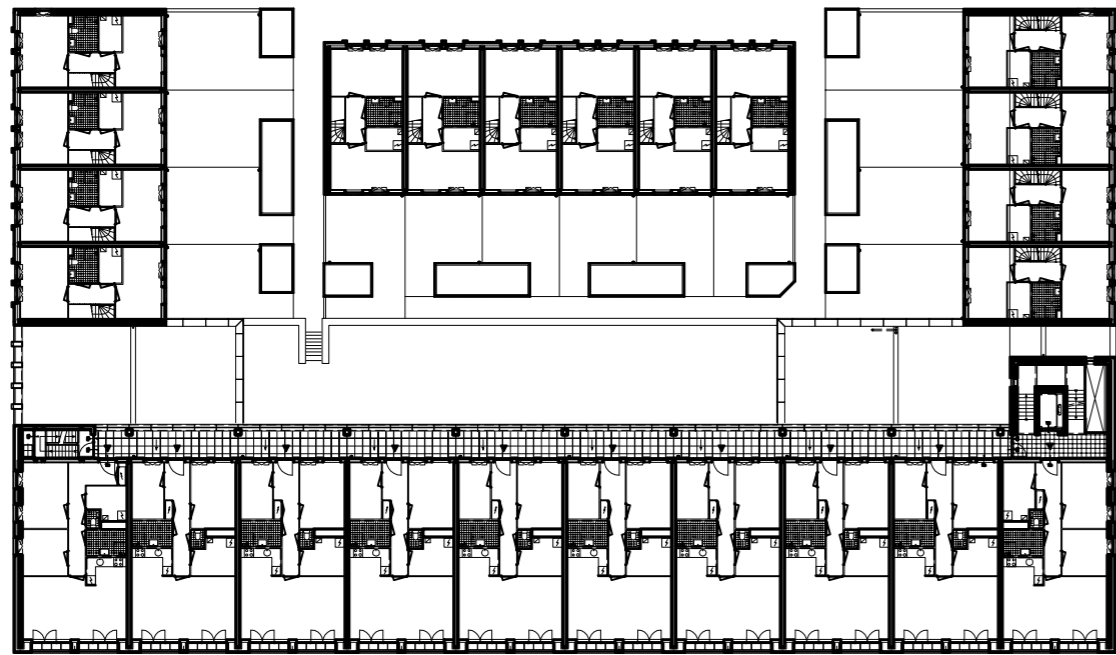
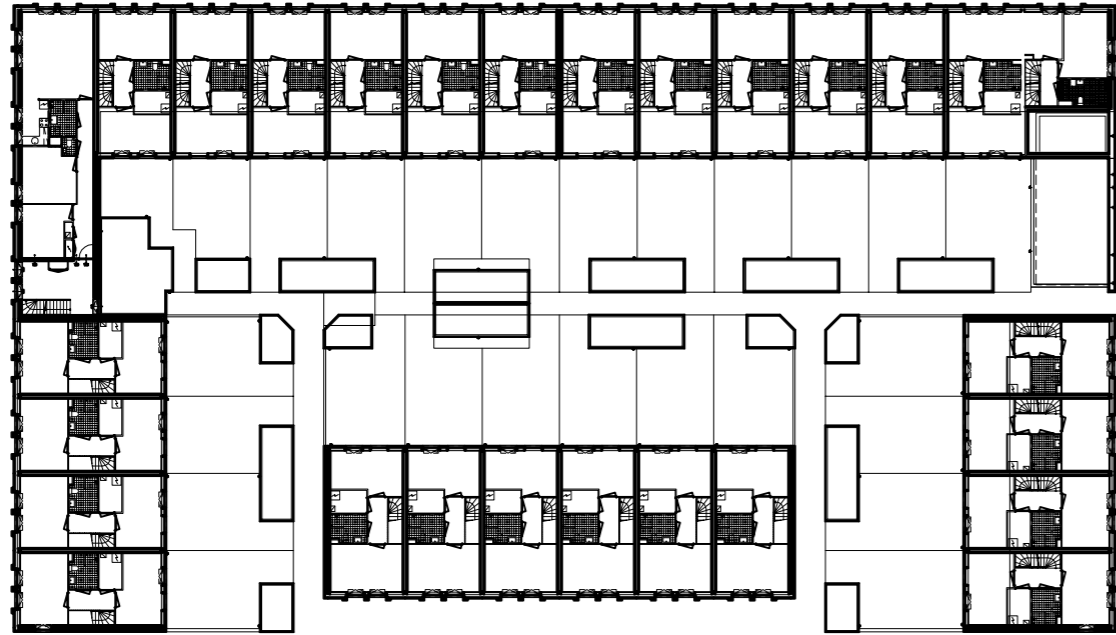
woning-aantallen

type	omschrijving	aantal
SH	14x woningtype basis 3 laag / 12x woningtype basis 2 l.	26 stuks
ST	14x woningtype basis 3 laag / hoekwoning	15 stuks
AKH	3x appartementen Noordoostelijke hoek	63 stuks
	60x appartementen	
	totaal aantal woningen	104 stuks



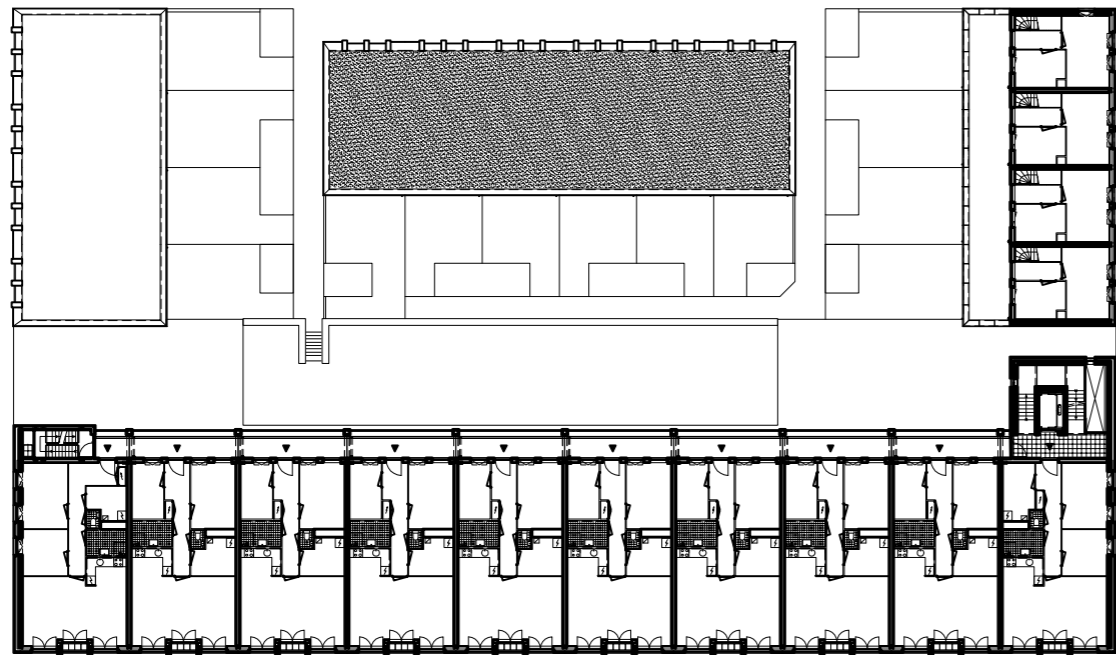
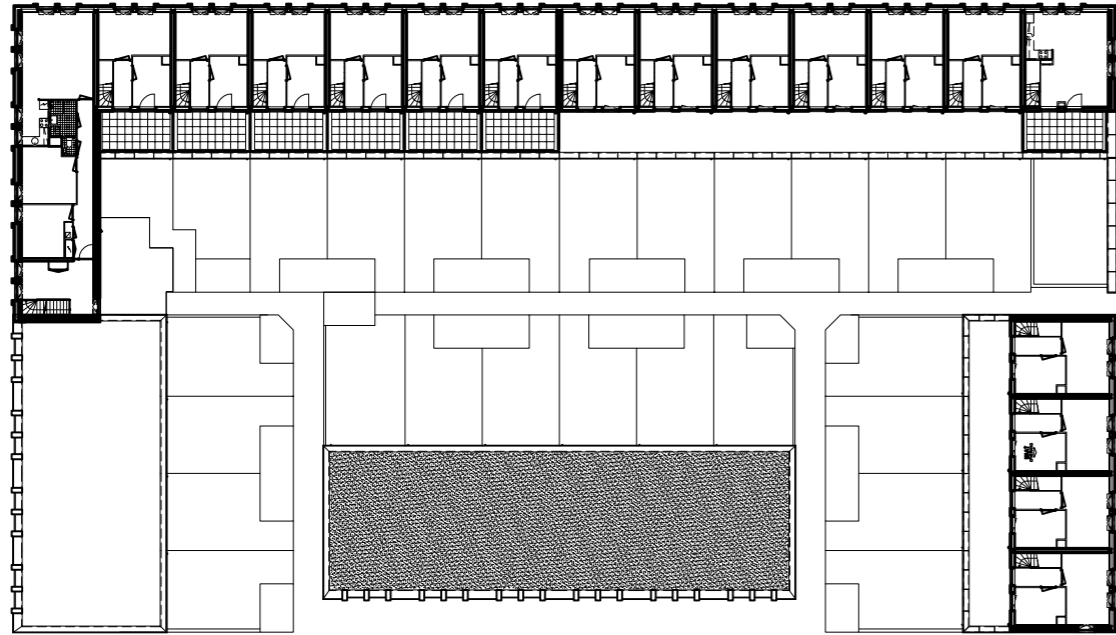
ASB



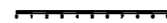


1e verdieping



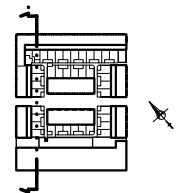


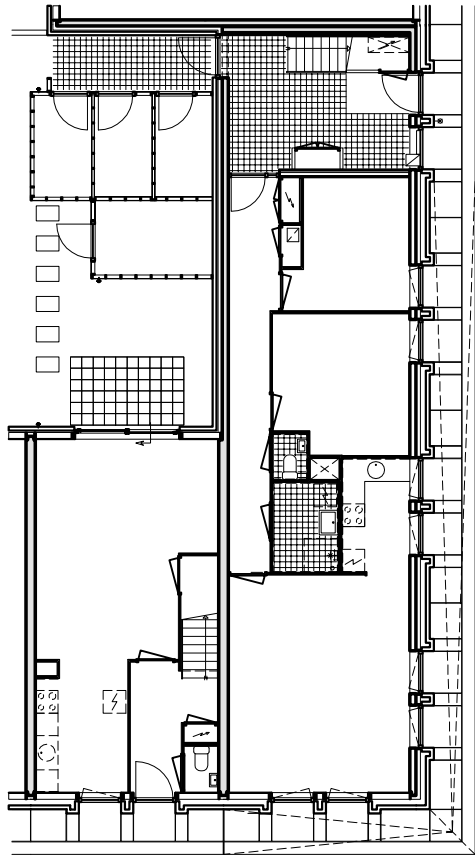
2e verdieping





Zuidoostgevel

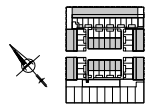




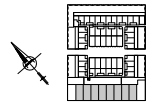
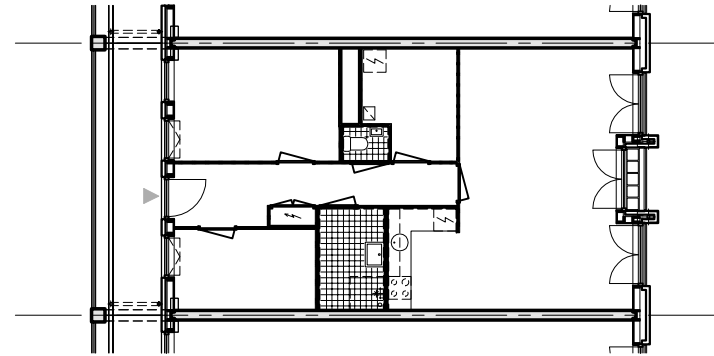
beganegrond



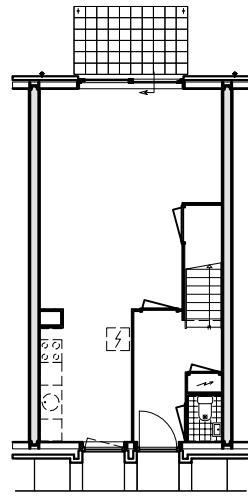
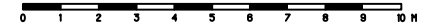
hoekappartement



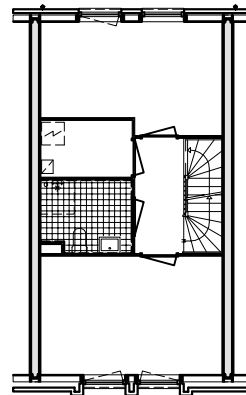
basis ongeschworen



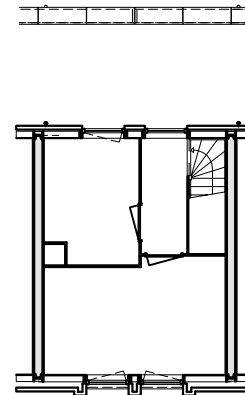
basis appartement



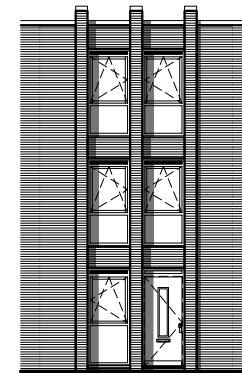
beganegrond
woningtype A/A'



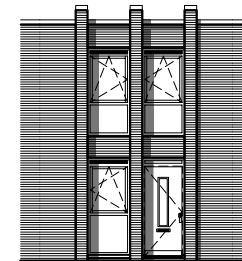
1e verdieping
woningtype A/A'



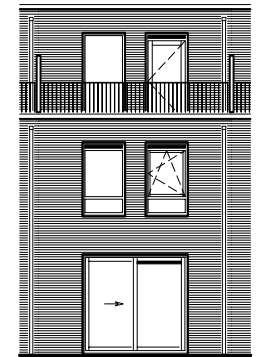
2e verdieping
woningtype A



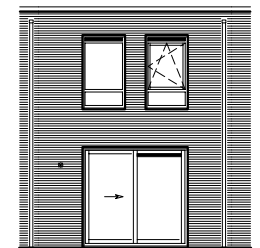
voorgevel
woningtype A



voorgevel
woningtype A'



achtergevel
woningtype A



achtergevel
woningtype A'