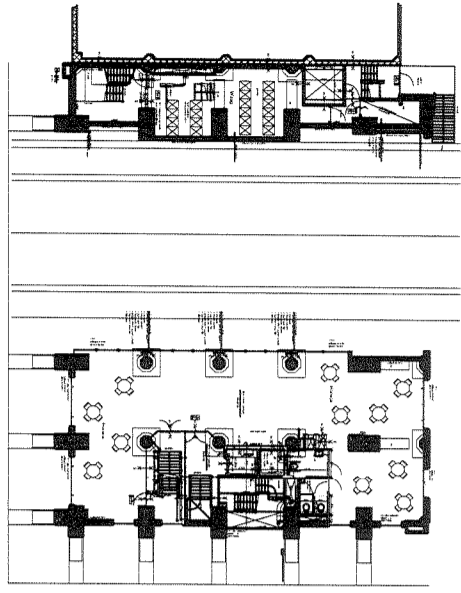
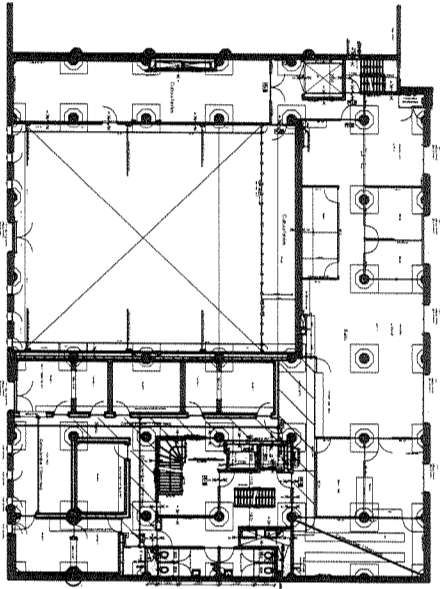


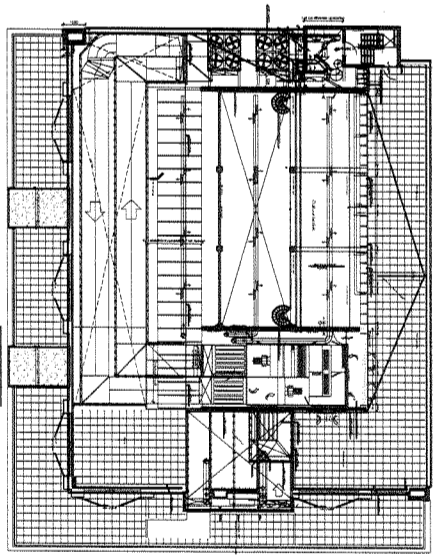
Pakhuis de Zwijger		Werknummer:	
Opdrachtgever: Stadsherstel / AMF		ZWO10001	
Situatie Pakhuis De Zwijger, Piet Heinkade 179-181 A'dam			
Datum:	26-09-2008	Gevraagd:	D H I M
Schaal:	1 op 2000	A	E J N
Gebruik:	HGR	B	F K O
Aanslag:	AS	C	G L P
Architectenburo J. van Sigjt b.v., Herengracht 408, Amsterdam Tel:020-6245344		100	



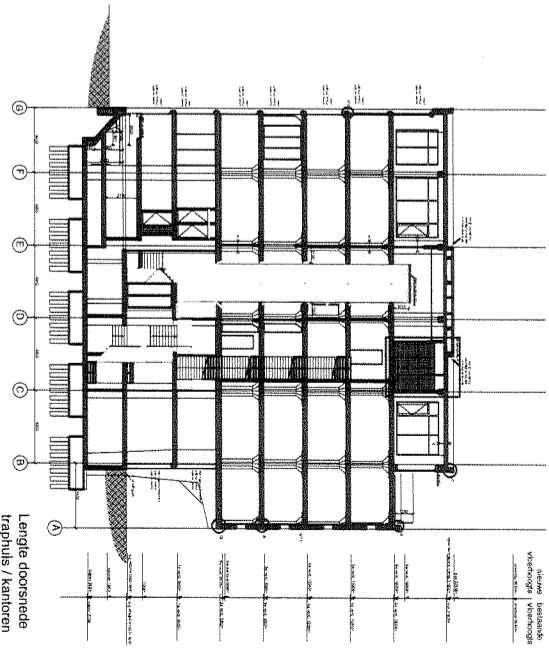
1e verdieping



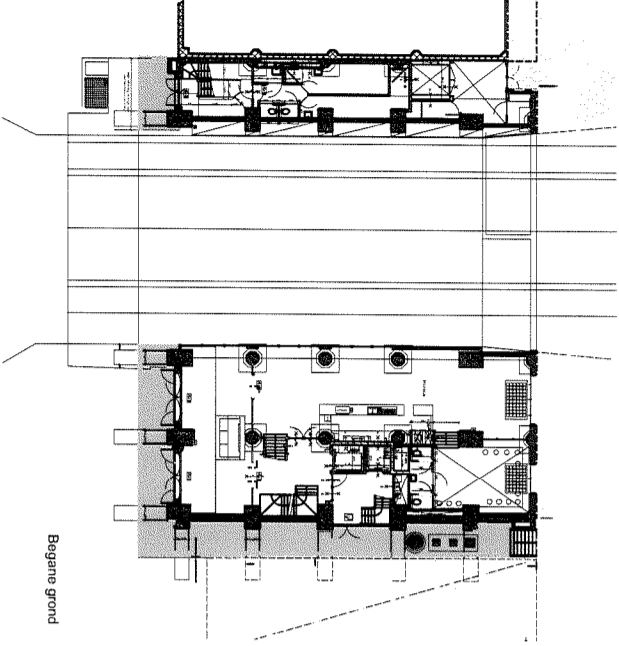
4e verdieping



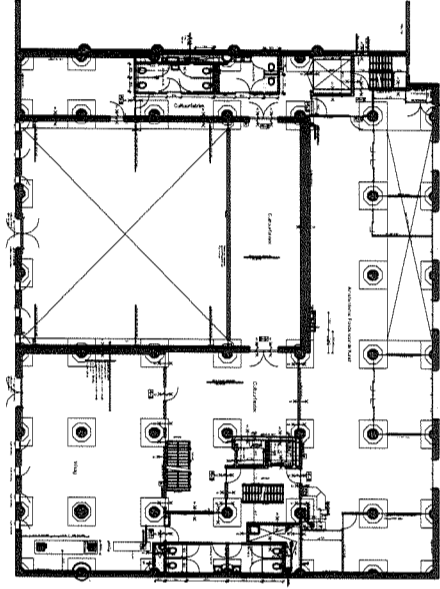
7e verdieping



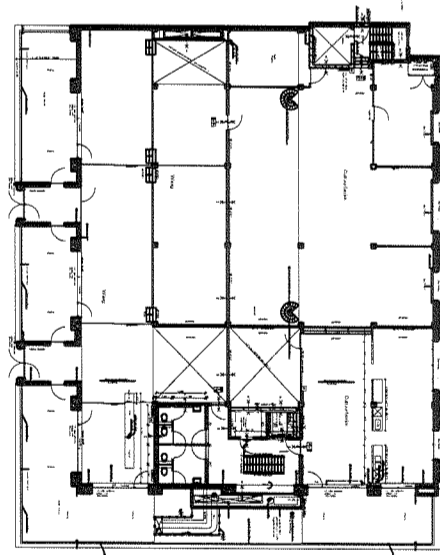
Lengte doorsnede traphuis / kantoren



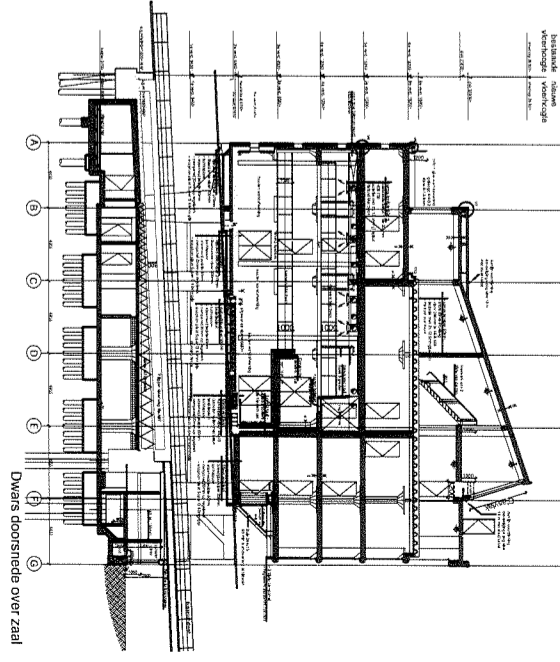
Begane grond



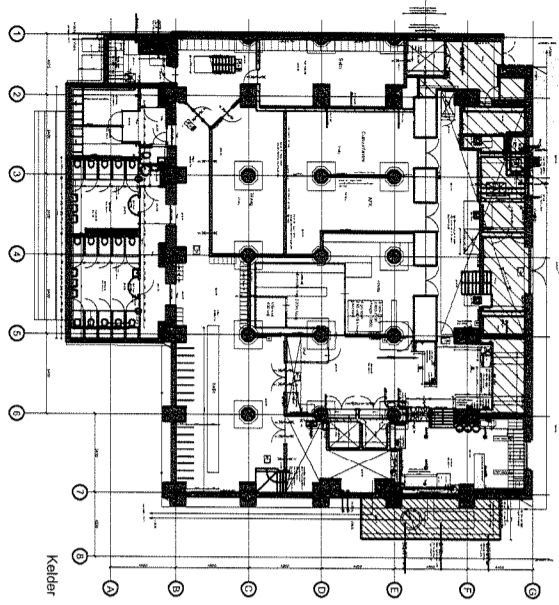
3e verdieping



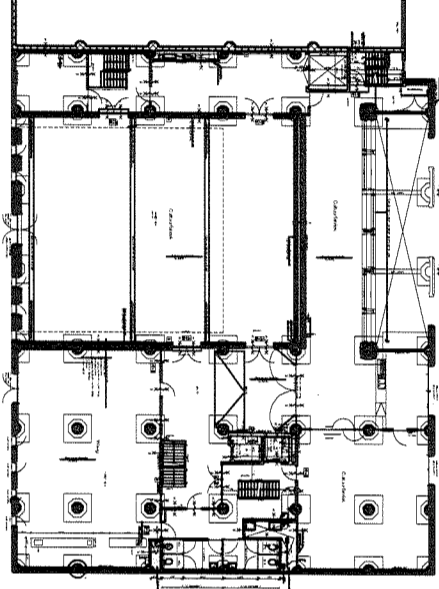
6e verdieping



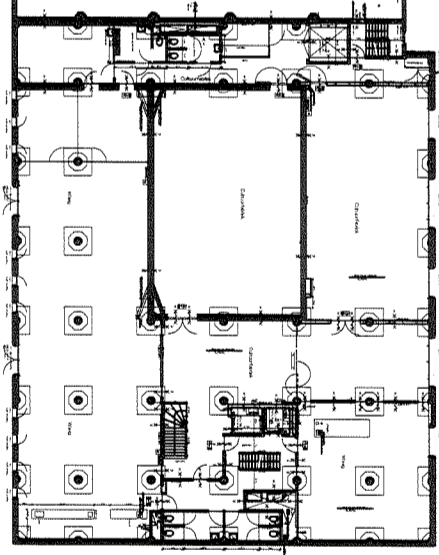
Dwaars doorsnede over zaal



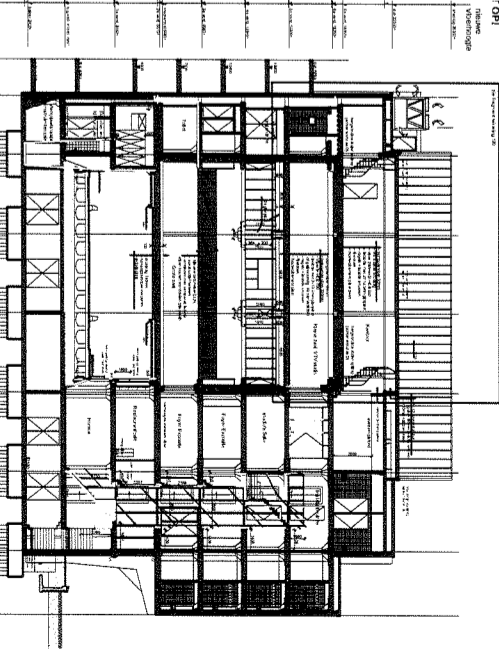
Kelder



2e verdieping

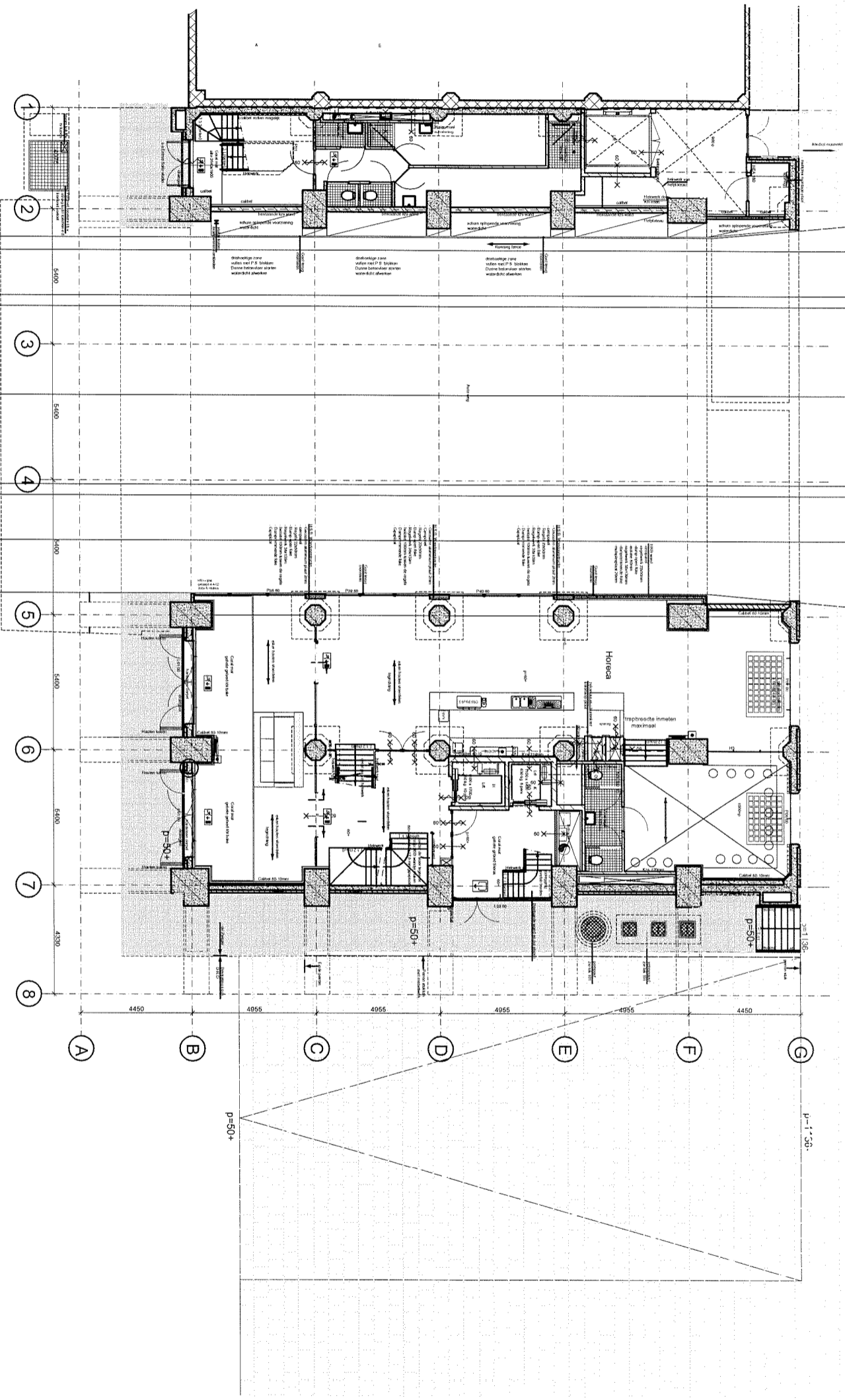


5e verdieping



Lengte doorsnede over brug en zaal



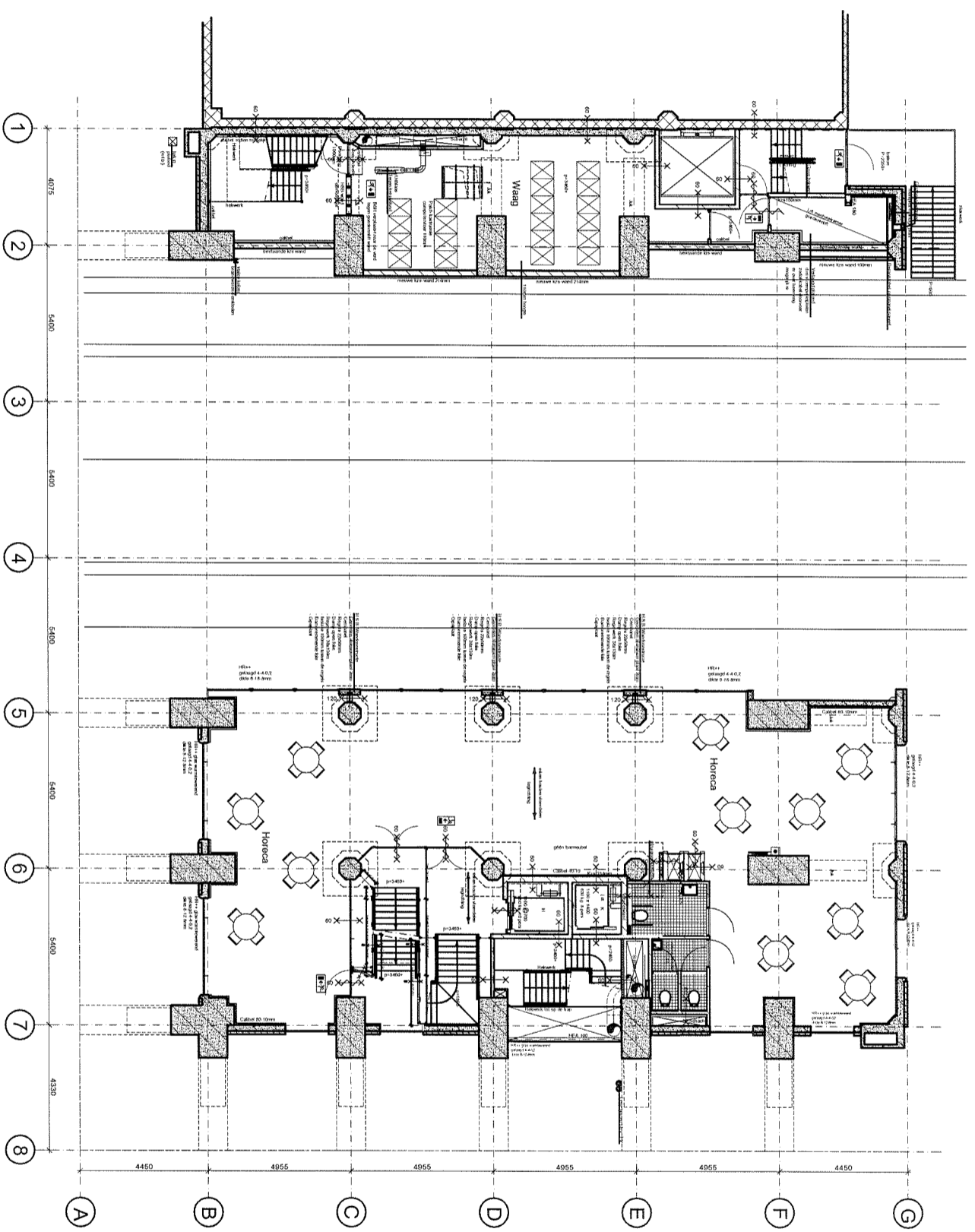


10m.

20m.

30m.

Begane Grond

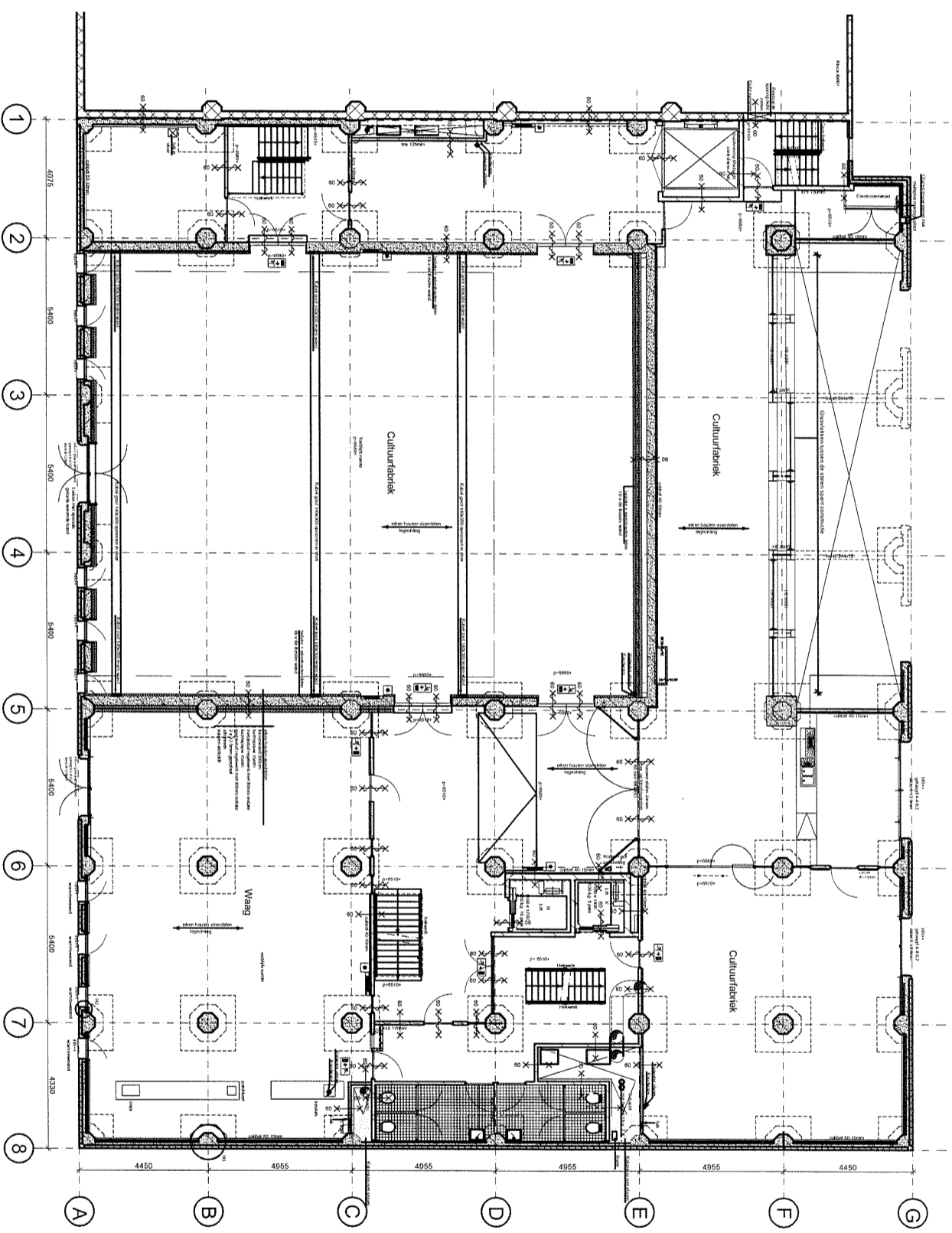


10m.

20m.

30m.

1e verdieping



10m.

20m.

30m.

2e verdieping