

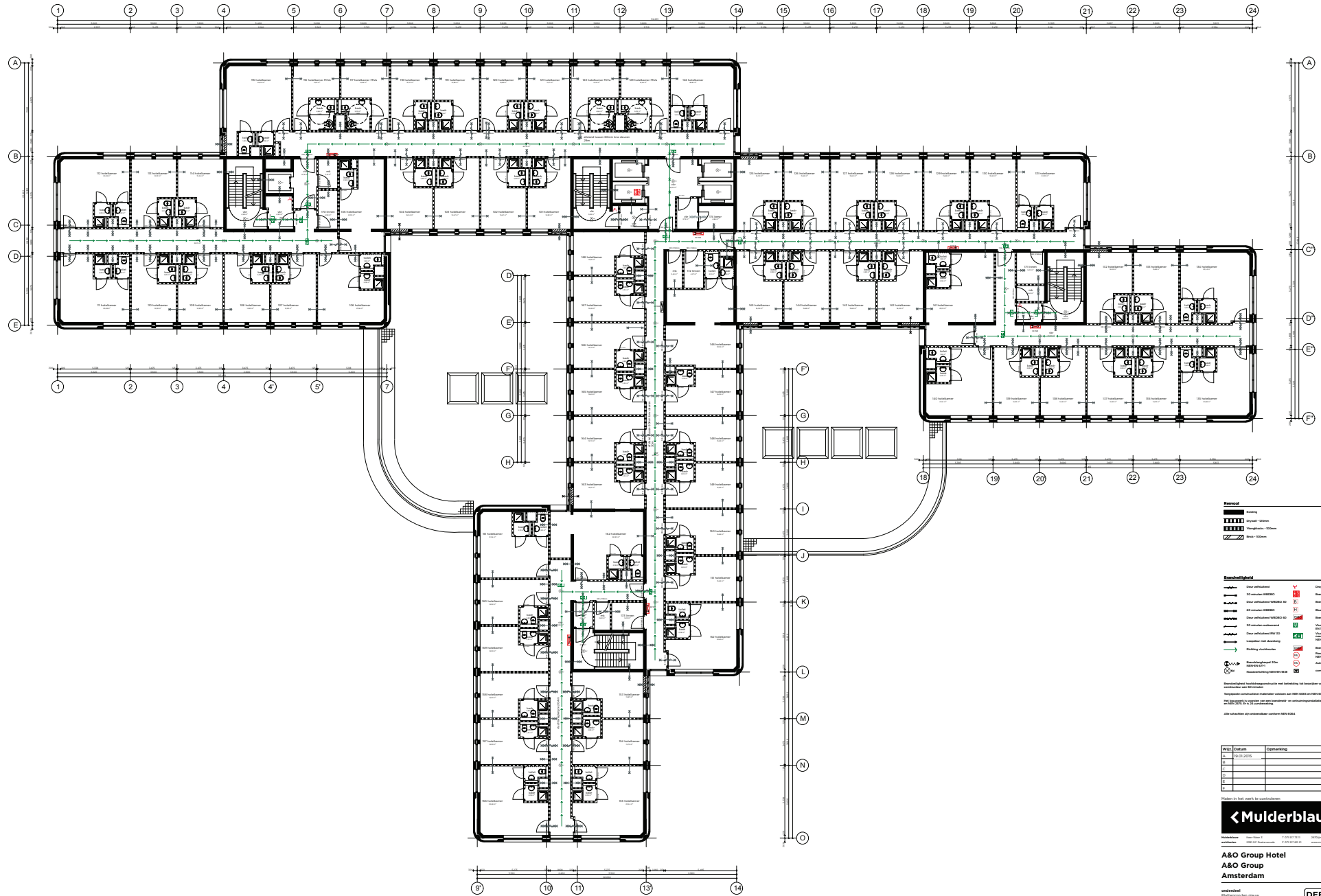


Ansicht Südwest



Schnitt B-B

Vorhaben:			
Grundstück: Hogehilweg 22 1101 CD Amsterdam Zuidooost			
Bauherr:			
Entwurf:	Dipl.-Ing. Architekt M. Langosch Dietrich - Bonhoeffer - Strasse 10, 10407 Berlin Tel: 030/247 36 75 Fax: 030/247 36 95	Phase:	Bearbeitung Schöne
Planinhalt:	Schnitt A-A und Schnitt B-B	Baukörper:	D-Name A.0 Entwurf
		Maßstab:	geändert:
		1:100	
		Datum:	Plan-Nr.:
		24.01.2014	3



- Legend**
- Wall
 - Door
 - Window
 - Staircase
 - Lift
- Room furniture**
- Door
 - Bed
 - Desk
 - Chair
 - Table
 - Chest of drawers
 - Wardrobe
 - Bathroom
 - Kitchen
 - Reception
 - Lobby
 - Staircase
 - Lift
 - Elevator
 - Escalator
 - Ramp
 - Circulation
 - Furniture
 - Lighting
 - Acoustic
 - Ventilation
 - Fire
 - Safety
 - Accessibility
 - Other
- Room furniture**
- Door
 - Bed
 - Desk
 - Chair
 - Table
 - Chest of drawers
 - Wardrobe
 - Bathroom
 - Kitchen
 - Reception
 - Lobby
 - Staircase
 - Lift
 - Elevator
 - Escalator
 - Ramp
 - Circulation
 - Furniture
 - Lighting
 - Acoustic
 - Ventilation
 - Fire
 - Safety
 - Accessibility
 - Other
- Room furniture**
- Door
 - Bed
 - Desk
 - Chair
 - Table
 - Chest of drawers
 - Wardrobe
 - Bathroom
 - Kitchen
 - Reception
 - Lobby
 - Staircase
 - Lift
 - Elevator
 - Escalator
 - Ramp
 - Circulation
 - Furniture
 - Lighting
 - Acoustic
 - Ventilation
 - Fire
 - Safety
 - Accessibility
 - Other

Wtg. Datum	Omschrijving	Getekend
A	14.03.2015	...
B		
C		
D		
E		
F		



**A&O Group Hotel
A&O Group
Amsterdam**

ontwerper: ...
 schaal: 1:100
 formaat: A0
 datum: 08.03.2015
 getekend: ...
 fase: ...
 gemaakt: 10.03.2015
 Revise: ...
 teken: GVI01

DEFINITIEF