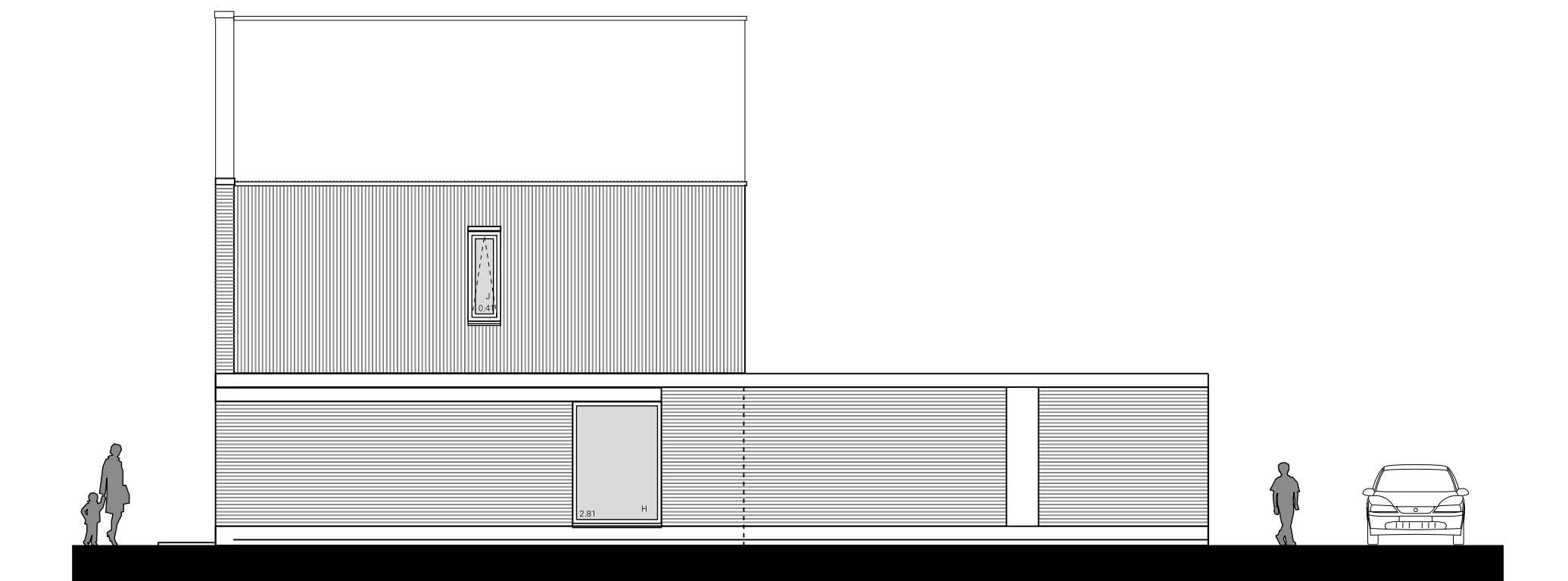


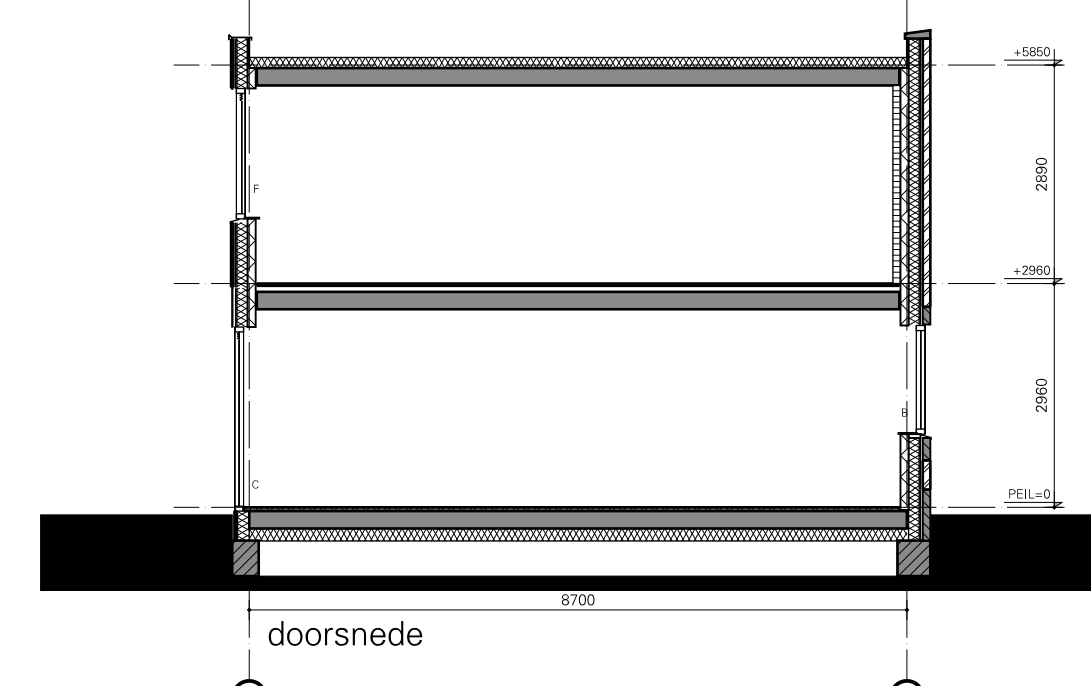
zijgevel Willemkerkestraat



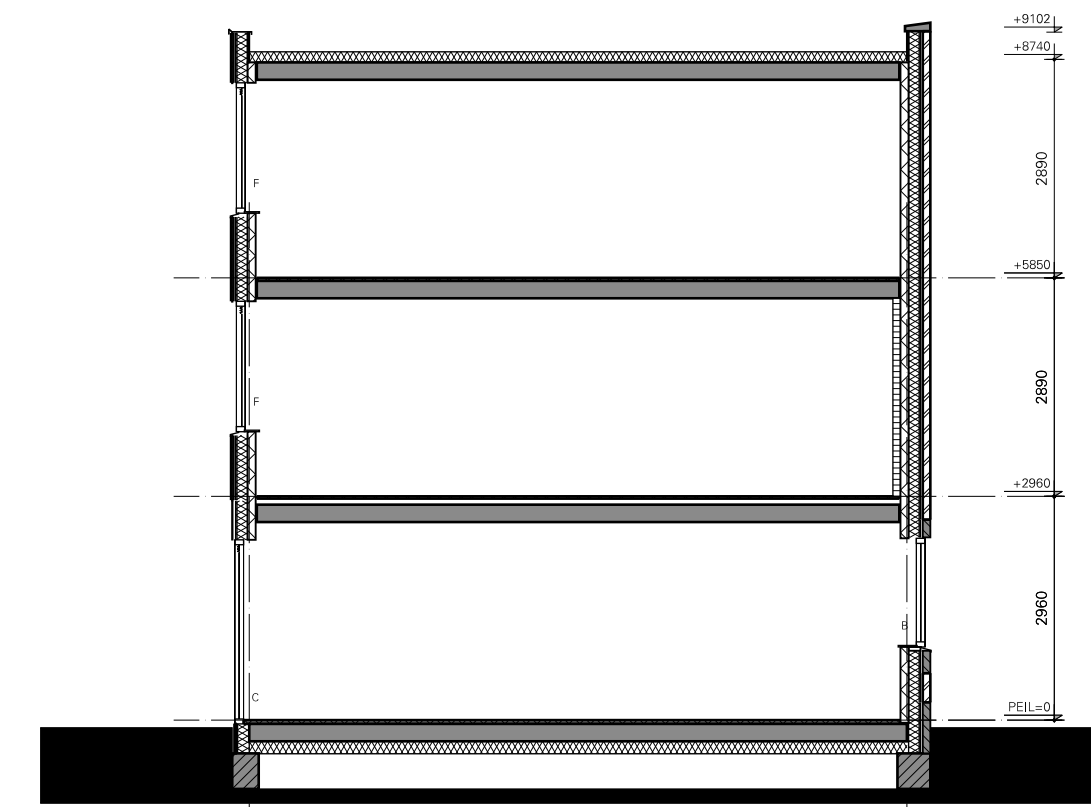
voorgevel Steelmietplein



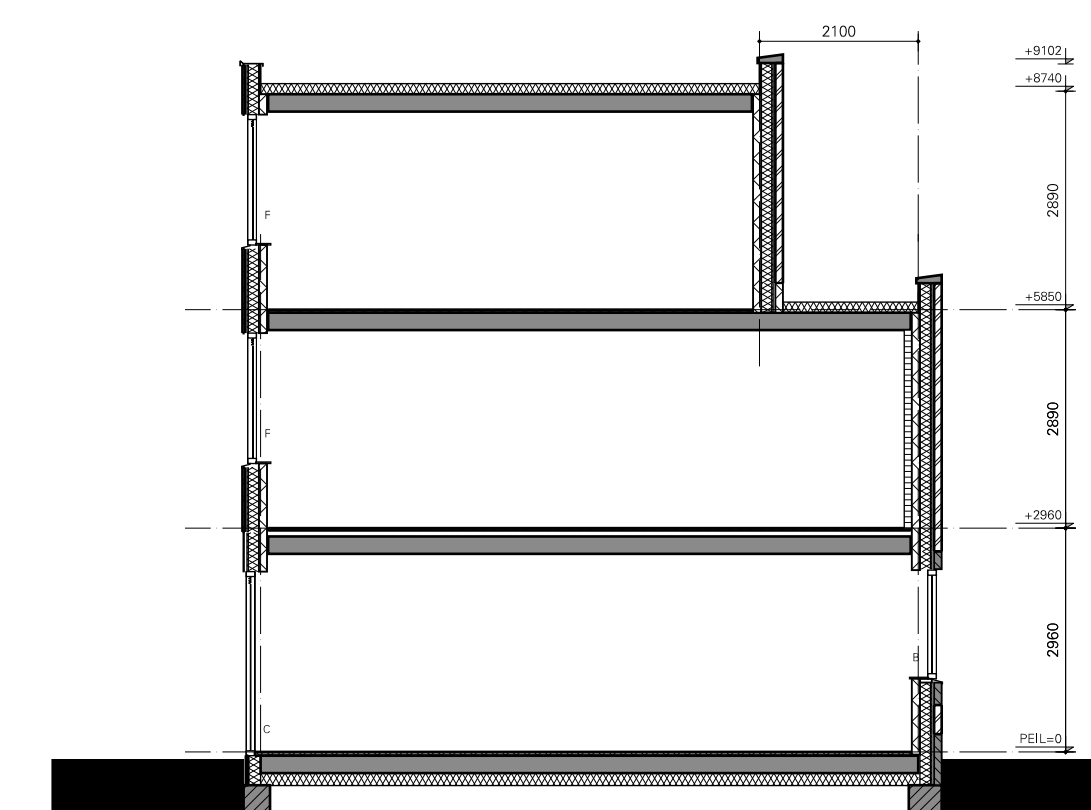
zijgevel Viveportenstraat



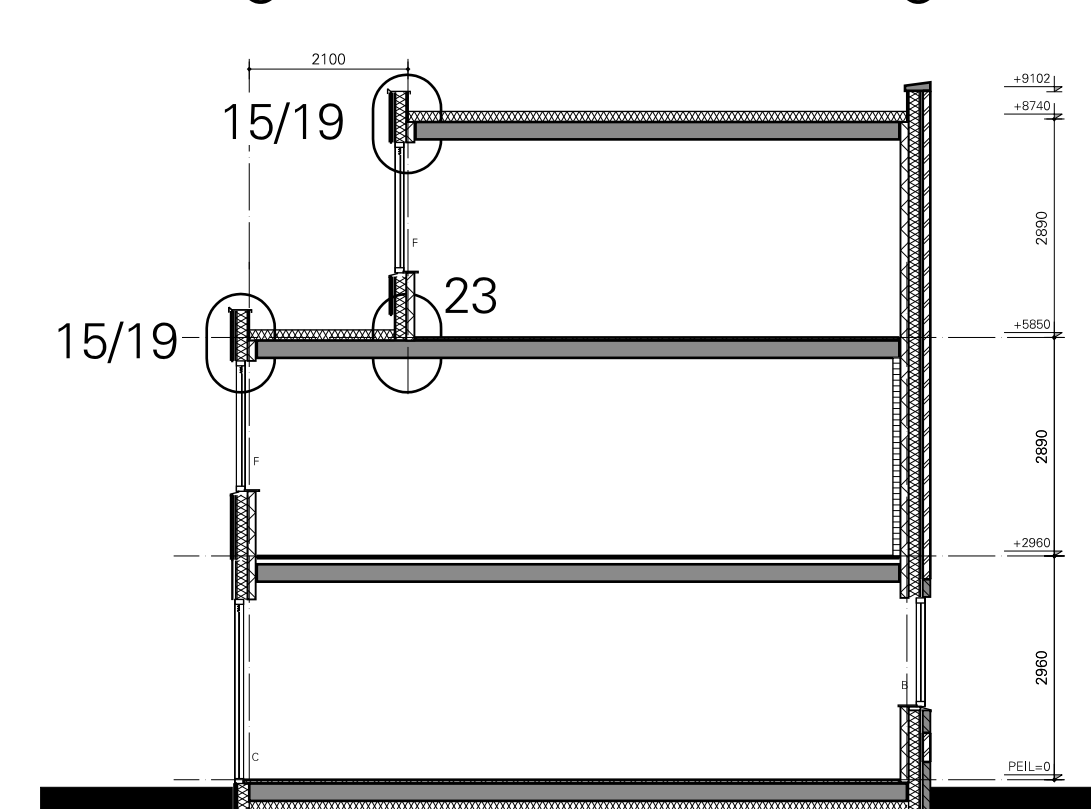
doorsnede



doorsnede



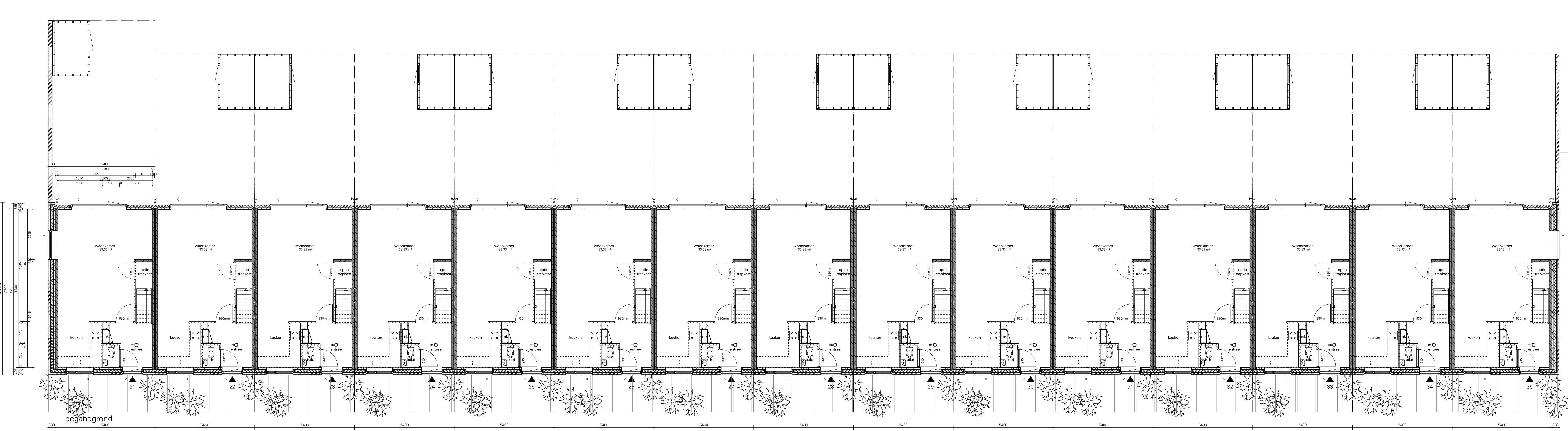
doorsnede



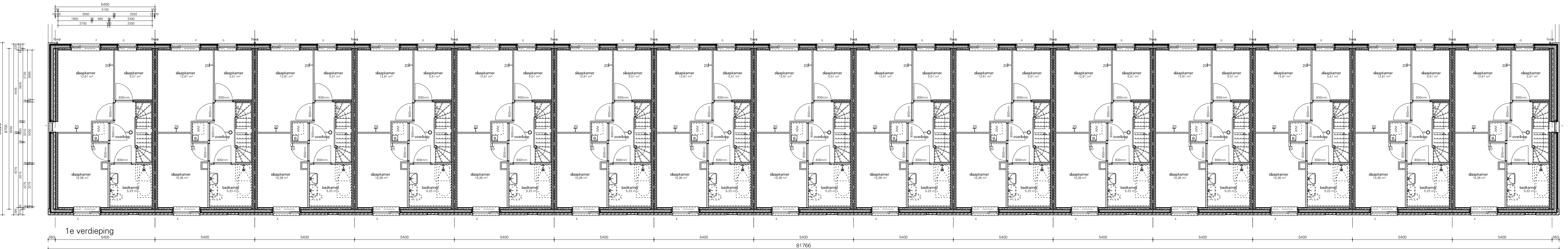
doorsnede



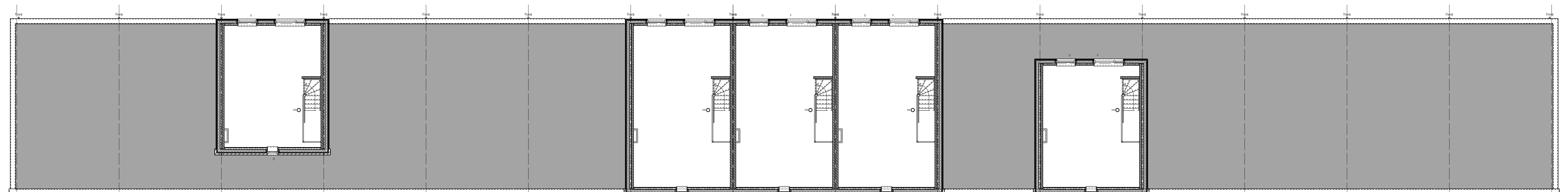
achtergevel Steelmietplein



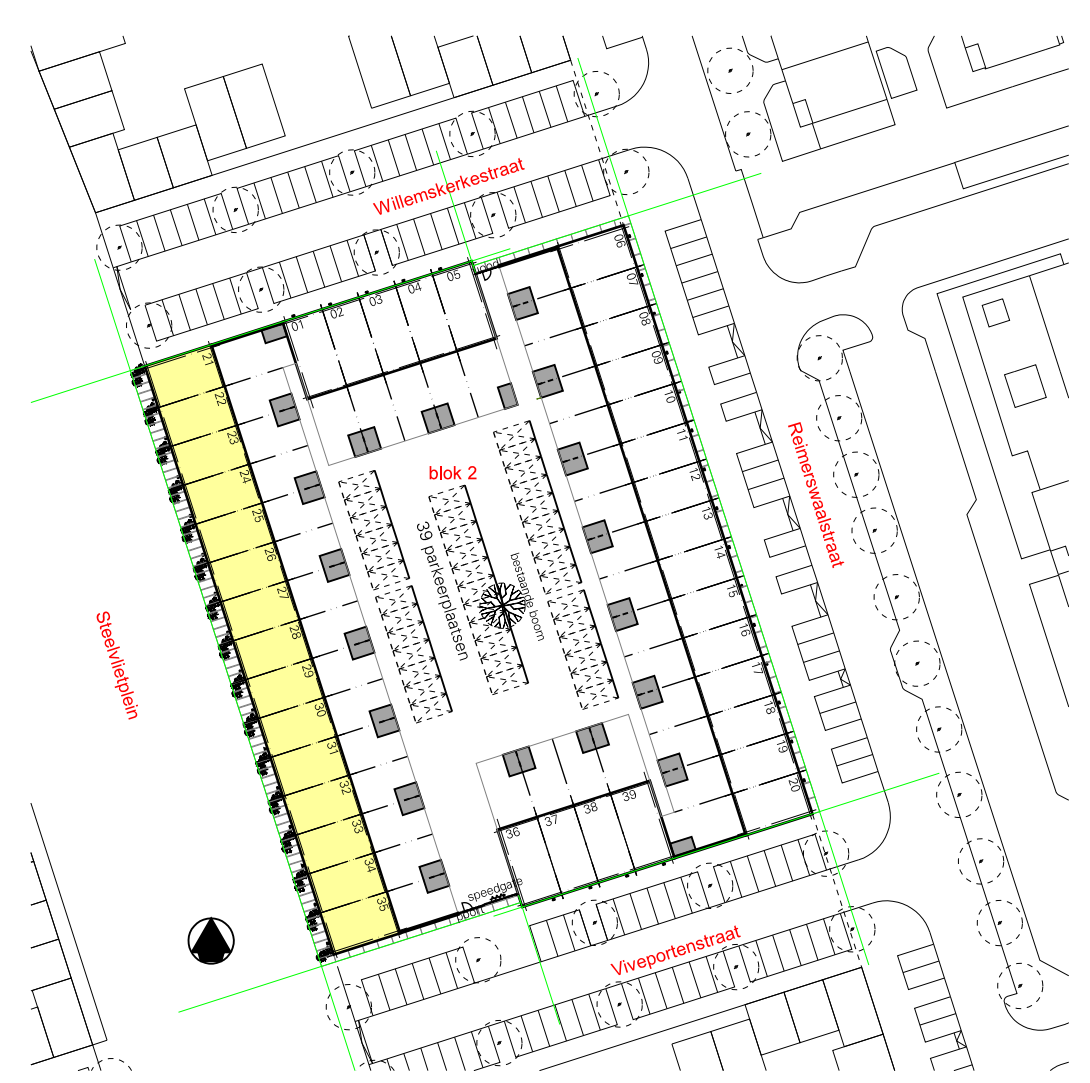
begane grond



1e verdieping



2e verdieping



Leijh, Kappelhoff, Seckel, van den Dobbelssteen, architecten.

Definitief ontwerp / DEFINITIEF / D0-04

Project	A1236 39 woningen Steelmietplein BLOK 2 Amsterdam-Oudorp
Opdrachtgever	Surffus Advanta b.v., Koopmans Bouw b.v. Postbus 508, 7600AM Amstelveen
Onderwerp	basisonwoningen 540x8700 met optionele opbouw Steelemietplein
Datum	06-11-2012
Geschied	1:100
Aanket	L101 1602-040
Tekenaar	A.Kappelhoff
Bestand	G:\A1236\1236-D0\1236P11 - plottekering algemeen.DRW